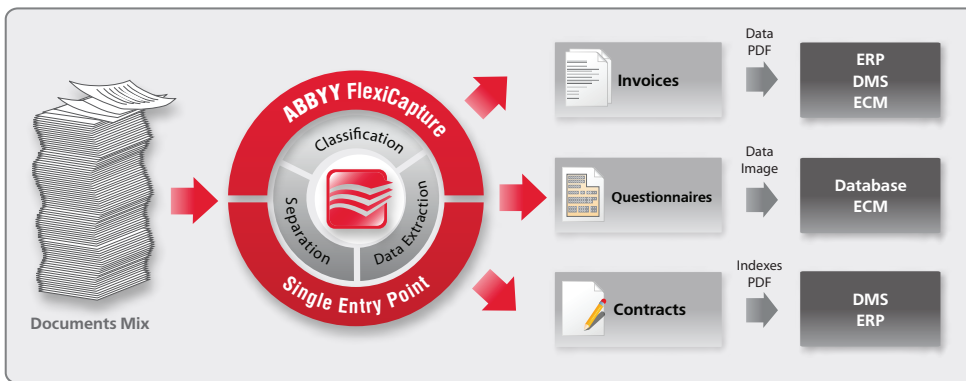




### What is ABBYY FlexiCapture 9.0?

ABBYY FlexiCapture 9.0 is a powerful data capture and document processing solution that provides a single point of entry for automatically converting streams of various documents into business-ready data with unmatched accuracy. Available in both a desktop and distributed-system solution, FlexiCapture 9.0 recognizes multiple languages and automates a variety of tasks, such as data entry, separating invoices from contracts, classifying by supplier, date and more—providing the data you need, fast. In addition, this multi-lingual solution can also integrate with back-end systems and into specific business processes to improve overall efficiency and reduce costs for organizations of any size. FlexiCapture 9.0 has incorporated a new engine to provide extensive new features for even greater productivity!



### Automated data capture for all document types

Streamline business processes by automating time- and resource-consuming manual tasks, such as pre-sorting and data entry for business-critical documents, including invoices, agreements, purchase orders, registration forms and more.

### High-quality data output

Ensure accurate business-ready data output with award-winning FlexiCapture and recognition technologies and rules-based automated verification methods.

### Easy scalability

Expand your data and document capture environment as your company's needs grow. FlexiCapture supports both standalone and distributed deployment across organizations to automate all the resource-intensive operations. It automatically balances the workload to ensure the best processing performance while managing productivity and high-volume throughput.

### Remote document capture

Capture documents right at their point of entry, reducing extra steps and costs of delivery and paper storage.

### Extensive language support

International companies need only one solution to process documents in multiple languages, including Chinese, Japanese, Korean, Vietnamese and 180 more!

### Flexible integration and customization tools

Customize your data and document capture solution and smoothly integrate into your existing business processes using scripts and web service API.

### Key Benefits

#### Do More with Less

Increase efficiency with more resources and time freed from tedious manual data entry

#### Achieve Fast ROI

In as soon as 6-12 months, you'll experience a return on your investment

#### Enjoy Quality Results

Award-winning FlexiCapture technology will quickly and accurately extract data from documents for precise, reliable and smooth data flow

#### Gain Competitive Edge

Get ahead with increased productivity and responsiveness from faster data extraction and higher data quality

#### Expand Productivity

Start automating processes in one department and expand to the whole company with a variety of documents—all using the same FlexiCapture solution

#### Easy to Use

It's simple to operate with its easy interface for verification and document definition development

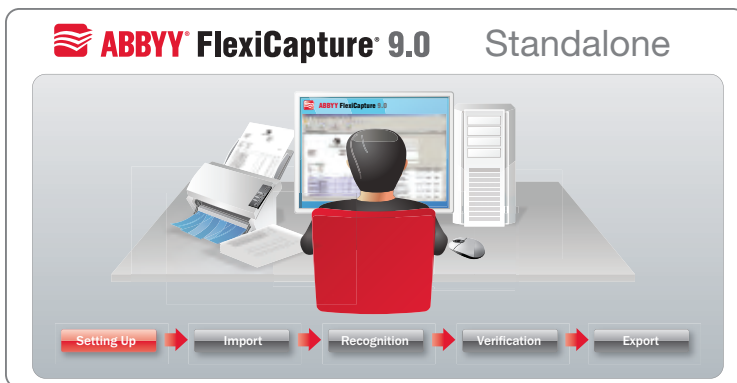
# Functionality Overview

## Working with FlexiCapture 9.0

FlexiCapture 9.0 comes in two versions: Standalone for low to mid-size projects and a Distributed version for larger projects.

### FlexiCapture Standalone

With FlexiCapture Standalone, small organizations and workgroups benefit from a simple way to implement data capture systems. Standalone installation provides the entire range of data capture capabilities from document import to data export—all executed on a single machine.



### FlexiCapture Distributed

FlexiCapture Distributed delivers high-performance data capture functionality through a scalable, client-server architecture designed to support high-volume processing in a distributed network environment. It includes a set of dedicated server components for data processing—with workload balancing to ensure maximum productivity—and multiple client-operator stations for each step in the data capture process: set-

up, administration, scanning, verification and monitoring. Additionally, organizations benefit from a unique solution that combines state-of-the-art technologies for distributed data capture with an easy-to-learn and use interface for manual verification and document template development.

### Distributed Server Components

#### Processing Server and Processing Stations

FlexiCapture 9.0 automatically executes all resource-intensive operations, such as image import, recognition, classification, data extraction, validation rules execution and export of data and images. The Processing Server has a scalable architecture and distributes tasks among its Processing Stations. When adding several stations, load balancing helps to boost productivity by enabling high-volume throughput.

#### Database Server

A Microsoft SQL Server keeps all data and processing stages and stores all information about users, batches, processing operations and statistics.

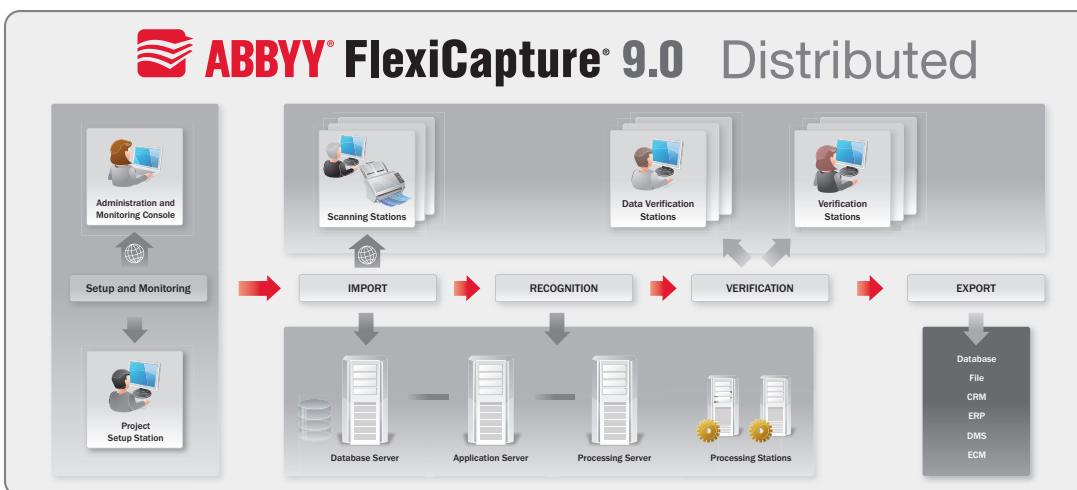
#### Application Server

The Application Server automatically handles all processing tasks and queues and distributes them among the stations according to priority and workflow settings.

### Administration and Setup Tools

#### Administration and Monitoring

Administrators can use the console to manage user rights, system administration, setup and easily track jobs or generate statistics, control and view document batches, queues and their status.



### Layout development and project setup

FlexiCapture 9.0 comes with a range of tools for layout development. ABBY Document Definition Editor is used to create machine-readable fixed form layouts. ABBY FlexiLayout Studio is used to develop semi-structured and unstructured documents like invoices or contracts.

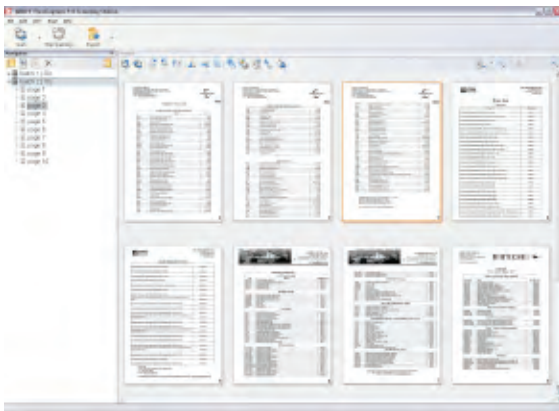
# Functionality Overview

## Document Processing with FlexiCapture Standalone and Distributed

FlexiCapture 9.0 offers a full range of functionality for document classification, data extraction and indexing to suit organizations with low or high volume of document processing needs.

### Scanning and image import

Scanning for low-volume projects is best handled by FlexiCapture Standalone. Batch scanning of large amounts of documents, management of scanners, quality control and preparation of images for subsequent processing is best suited for the Scanning Station in FlexiCapture Distributed. Organizations may use third-party scanning applications as FlexiCapture supports Hot-Folders to automate import. Scanning Station also allows pre-processing and simple assembling.



### OCR, ICR, checkmark and barcode recognition

FlexiCapture is based on ABBYY's award-winning recognition technologies that deliver unprecedented accuracy in multiple languages for OCR and ICR. 1D and 2D barcodes and checkmarks can be recognized, and powerful image pre-processing functions help to improve recognition quality.

### Automated data validation

Built-in validation rules are automatically applied during recognition to increase accuracy. Automatic data validation ensures high data quality and reduces the workload for subsequent verification.

### Document separation and classification

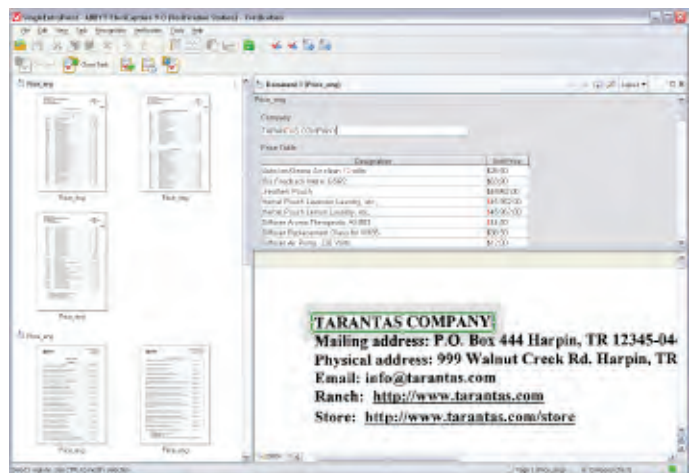
FlexiCapture provides both simple separation and advanced classification of documents. Intelligent classification via multi-page document definitions enables different document types to be processed in a single stream. And with the help of built-in multi-level classifiers, the document definition matching and data extraction process is optimized for higher productivity.

### Data verification

Data verification is embedded into FlexiCapture Standalone and is a separate station in FlexiCapture Distributed. Data verification is designed to execute low-level verification tasks to check if extracted data can be matched with original document information. Verification can be achieved on a group and field level with a full-scale image review if necessary. Documents can be sent to an exception queue in case data extraction results require additional verification or testing.

### Document-level verification

Data verification is a part of document-level verification, which is a separate verification station in FlexiCapture Distributed that includes all verification capabilities. Verification operators can check for assembly errors in document composition and rules validation for data accuracy. They can also manually re-assemble documents containing classification and assembling errors. Documents can be sent to any stage of the workflow if required by the business process.



### Data export

Data can be exported to back-end applications, databases or stored in enterprise repositories. Automated export and export to multiple destinations is also available. FlexiCapture 9.0 supports the following export destinations:

- Most common file formats
- Basic and advanced XML export
- External databases via ODBC
- Microsoft SharePoint®
- ERP, DMS, CMS and other business applications through custom modules, connectors or scriptable export

### Redaction and Archiving

Redaction allows the removal of confidential or sensitive data from certain fields. Document images can easily be prepared for archiving when converting them to Searchable PDF or PDF/A.

# Specifications, Licensing and Usage



## Specifications

### System requirements

- PC: Intel®Core™2/2 Quad/Pentium®/Celeron®/Xeon™, AMD 6/ Turion™/Athlon™/Duron™/Sempron™ processor or compatible with a minimum clock speed of 2GHz
- Operating systems (For server components): Windows Server® 2003 SP2 x86, Windows Server 2008 x86 + Hotfix for Windows (KB959489)
- Operating systems (For station components): Microsoft® Windows® XP SP2 x86, Windows Vista® SP1 x86 + Hotfix for Windows (KB959489), Windows Server 2003
- Memory: 1GB for every CPU core Required external components
- Microsoft .Net Framework 2.0 or higher
- Internet Information Services version 5.1, 6 or 7
- Crystal Reports Basic Runtime for Visual Studio® 2008
- Microsoft SQL Server® 2005 or 2008
- Web Browsers: Internet Explorer® 6, 7, 8; Firefox® 3.5; Opera® 8, 9.5
- Input formats: BMP, PCX, JPEG, JPEG 2000, PNG, TIFF, DjVu, DCX, PDFs (including PDF/A)
- OCR: 186 languages, 42 with dictionary support
- ICR: 113 languages
- OMR: framed and un-framed checkboxes, bubbles
- Barcodes: 1D barcodes, including EAN, Check, IATA, UCC and UPC; 2D barcodes, including PDF417, AZTEC and Data Matrix Data export formats
- Data export formats: XLS, DBF, CSV, TXT, CSV
- Basic and advanced XML export
- Database export via ODBC
- Export to Microsoft Sharepoint
- Export to back-end applications via custom modules
- Image export/saving format: BMP, PCX, PNG, JPEG, JPEG 2000, TIFF and DCX
- Export for archiving to searchable PDF and PDF/A

## Business Applications

Organizations across all industries have their own business processes and regulations. But they all deal in data and share the need to efficiently access that data from paperwork. FlexiCapture provides intelligent and accurate data extraction from a full range of document types, such as hand-printed forms, banking documents, invoices or contracts. With this powerful, reliable and scalable solution, organizations can streamline their business processes, increase responsiveness and keep up with ever-increasing transaction speeds.



Healthcare  
Accounting  
Human Resources  
Government  
Banking and Finance  
Insurance  
Education  
Transportation

Invoices  
Purchase orders  
Payments slips  
Mortgage documents  
Loan applications  
Tax returns  
Voting ballots  
Surveys

Surveys  
Tests  
Contracts  
HCFA and CMS, UBs  
Timesheets

## Testimonials

Kimco: Saved \$50,000 in 2008 and plans to save \$100,000 in 2009

Trendset: Saves \$60,000 per year; cut turn-around time by 40%

Montgomery County: Cut time-sheet processing by a quarter; boosted efficiency for multiple departments

Alameda County: Less staff and no overtime required for large election

## Customer Quotes

*"We pride ourselves on being progressive, and ABBYY FlexiCapture lets us continue our trend of being a step ahead of the competition."*

— **Training and Development Manager, Kimco Staffing Services**

*"It was a drastic improvement in both man hours and overall time...We couldn't have asked for anything more."*

— **Infrastructure Services Manager, Alameda County**

*"The electronic process eliminated postage, copying, mailing and courier costs, and the time associated with physically moving documents from site to site."*

— **COO and CFO, AthletiCo**

## ABBYY FlexiCapture 9.0 Licensing

FlexiCapture 9.0 Licenses include key functionality that can be extended by adding language support for CJK, Thai and Vietnamese. Additional custom modules for data export to industry-leading backend applications are also available.

### ABBYY USA

880 North McCarthy Blvd., Suite 220  
Milpitas, CA 95035, USA  
Tel +1 866.463.7689  
Fax +1 408.457.9778  
sales@abbyyusa.com

[www.ABBYYUSA.com](http://www.ABBYYUSA.com)

# ABBYY®