
HT-4139-28/48 Scanner TWAIN Driver

User's Guide

(Functions and Operations)

HITACHI

Preface

Thank you very much for using our TWAIN Driver. This manual provides the functions of the TWAIN Driver.

Read this manual carefully to use the TWAIN Driver properly.

Notes

- It is strictly prohibited to reprint or copy part or all of this manual without our permission.
- The content of this manual is subject to change without prior notice due to improvement.

In this manual following shortened forms are used.

- Hitachi scanner TWAIN driver (Hereinafter "TWAIN driver")
- User interface of Hitachi scanner TWAIN driver (Hereinafter "User interface of TWAIN driver")

Indication of non-Hitachi trademarks

Windows XP, Windows Vista, Windows 7, Visual C++, and Visual Basic are registered trademarks of Microsoft Corporation in the United States and other countries.

Feb 2008 (First edition)

July 2009 Explanation of function that cannot be used

Jan 2010 Patchcode function

Mar 2010 Add Error Code

Required System Environment

Using the TWAIN Driver requires any of the scanner devices listed below:

HT-4139 Scanner Device

There are items and contents that cannot be specified by the device composition and the addition product.

You cannot use such a scanner device when it is being used by another application.

You need an application in which the TWAIN Driver can be used.

We have the known problems as listed below:

Please use the fontsize of the display by a Normal size.

It is not likely to be able to display it correctly when using it by a large size.

Other Cautions

When acquiring huge images or color images or converting the output resolution, you may fail to acquire images because of memory shortage.

Operation Check

It is a product to confirm the operation.

Fuji Xerox DocuWorks 6.2

Read Prior to Operation

Read followings to understand functions of this driver and to use it effectively.

This manual does not describe about the TWAIN standard,

It is necessary to understand the TWAIN standard to develop / test application programs.

(1) How to scan

There are 3 ways to scan images with this driver.

1) Displaying the user interface of the TWAIN driver and setting parameter to scan images. With this screen, multiple parameter setting can be saved in a parameter file. When other scanners are used or the scanner option is changed, the parameter file cannot be used.

2) Without displaying the user interface of the TWAIN driver, scan images using the parameters set by 1).

3) Without displaying the user interface of the TWAIN driver, set Capabilities by a triplet and scan images.

If you scan images with 2) or 3) above, you need to read "HT-4139-28/48 Scanner TWAIN Driver *Developer's Guide*".to set up systems or develop an application program.

(2) Scanned image

The TWAIN driver capture images on both sheet sides, B& W / color images, B & W / gray scale images with a single scanning. In this case an application program should be able to handle multiple images.

(3) Sheet feeding

Hitachi scanners equipped an Auto Document Feeder (ADF) to improve business efficiency. And also an auto scanning function is supported. The auto scanning function can start scanning by just putting sheets in the hopper without key operation.

(4) Stacker

There are Hitachi scanners that equip a dual stacker.

If "Non sequence scanning" is specified, sheets that cannot scanned will be ejected to another stacker and scanning can be continued.

The ejected sheets should be put the hopper for rescanning after all sheets are scanned.

This function is specified when sheet ordering of scanning is not matter.

(5) Bar code

This TWAIN driver can scan bar codes. An application program should have a function to capture bar codes.

(6) Multiple Feeding

Sheet checking before scanning is recommended to avoid miss scanning.

Hitachi scanners can detect multiple feeding by checking sheet length, width, thickness, or skew.

Set up systems that can check scanning miss for actual operation.

Set up a sheet check function properly for conditions of paper quality and mixed sheet scanning. (No default setting for sheet checking.)

(7) Imprinting (Numbering)

Hitachi scanners support an imprinting function that can be used for scanning check.

This is effective for avoiding multiple feeding error.

(8) System set up

When you create an application program with the TWAIN driver or using existing program, perform enough tests before actual operations.

Consider following situations for the scanning test.

Fail scanning with the TWAIN driver.

Scan images successfully but a host can not save the images

Fail imprinting with the TWAIN driver.

- Continue scanning process after an error with the TWAIN driver occurs

Precautions for Use

Continuous scanning

If the application program does not support the continuous scanning, performance may become lower than expectation.

If sheets are too thin, copy papers, with glue, or mixed sizes, multiple feeding error might occur. Using options and/or the sheet check function, try to scan them correctly.

Scanned images

To confirm if the scanned data satisfy the level of customer's accuracy and quality, check the gradation and density of scanned images.

This TWAIN driver does not support pre-view function.

Scanned data

This device can detect sheet sizes and multiple feeding but it might fail to catch multiple feeding depending on conditions.

Inspect all scanned image data after scanning sheets and make sure that all sheets are scanned correctly.

Extra attention is required when check will not performed or sheets will be discarded.

Imprinting (Numbering)

The imprinting is conducted after scanning but in some cases there might be imprinting without image depends on operation of the application program.

There might be imprinting on wrong sheet due to multiple feeding error, etc.

Compare the original sheet and scanned data and ensure there are no missing images.

Note for System Set up

Keep followings in your mind when you set up systems with the TWAIN driver.

TWAIN driver's triplet information is not published in this manual.

Refer to another manual, too, "HT-4139-28/48 Scanner TWAIN Driver *Developer's Guide*".

Default is set without function. Add needed functions for operation. And make sure they are installed correctly.

Hitachi scanners can check scanning status with the multiple feeding error detection and the imprinting function but it is not always perfect. Set up systems so that it can check if images in sheets are the same as scanned ones.

Contents

Preface.....	1
Notes.....	2
Required System Environment	3
Read Prior to Operation	4
Precautions for Use.....	6
Note for System Set up.....	7
Chapter 1. TWAIN User Interface	1 – 1
1.1 TWAIN User Interface.....	1 – 1
1.2 Sheet Checking Settings Dialog box	1 – 6
1.3 Scanning Image Settings Dialog box	1 – 9
1.4 Image Settings Dialog box.....	1 – 12
1.4.1 Scanning Image	1 – 12
1.4.2 Image Processing.....	1 – 22
1.4.3 Background /Frame Drawing.....	1 – 24
1.5 Feeding Settings Dialog box	1 – 26
1.6 Numbering Settings Dialog box.....	1 – 29
Numbering Data Settings Dialog box	1 – 31
1.7 Recognition Settings Dialog box	1 – 33
1.7.1 BarCode.....	1 – 33
1.7.2 PatchCode.....	1 – 42
1.8 Saving Scanning Parameter Settings Dialog box	1 – 45
1.9 Selecting Scanning Parameter Settings Dialog box	1 – 47
Chapter 2.Error Codes	2 – 1
2.1 Scanner Detailed Error Code List	2 – 1
2.2 Error Code (Host).....	2 – 10
2.3 List of Condition Codes.....	2 – 39
2.4 Error Dialogs In Scanning.....	2 – 69
2.5 Dialog when Scanning Suspended.....	2 – 70

Appendix	A-1
A-1 Dump Information	A-1
A-2 How to Analyze Error	A-5
A-3 How to Recover Error	A-6
A-4 Notes on Four-point detection	A-7
A-5 Notes on Four-Point-Coordinates Recognition Errors	A-9
A-6 Note for sheet check	A-10
A-7 Notes on Numbering	A-11
A-8 Notes on PatchCode	A-12

Chapter 1. TWAIN User Interface

1.1 TWAIN User Interface

For a commercially available application or for an application which is assigned settings to indicate the user interface dialog box, the TWAIN User Interface Dialog box shown in Figure 1.1 is displayed.

To Use this driver from the TWAIN application,select"HT-4139 OCR Image Scanner" from the Select TWAIN data source dialog box.

For general application, the Select TWAIN data source dialog box is displayed by selecting the [Select Source...]or[Acquire...]menu.

Refer to the instruction manual for the application used for details.

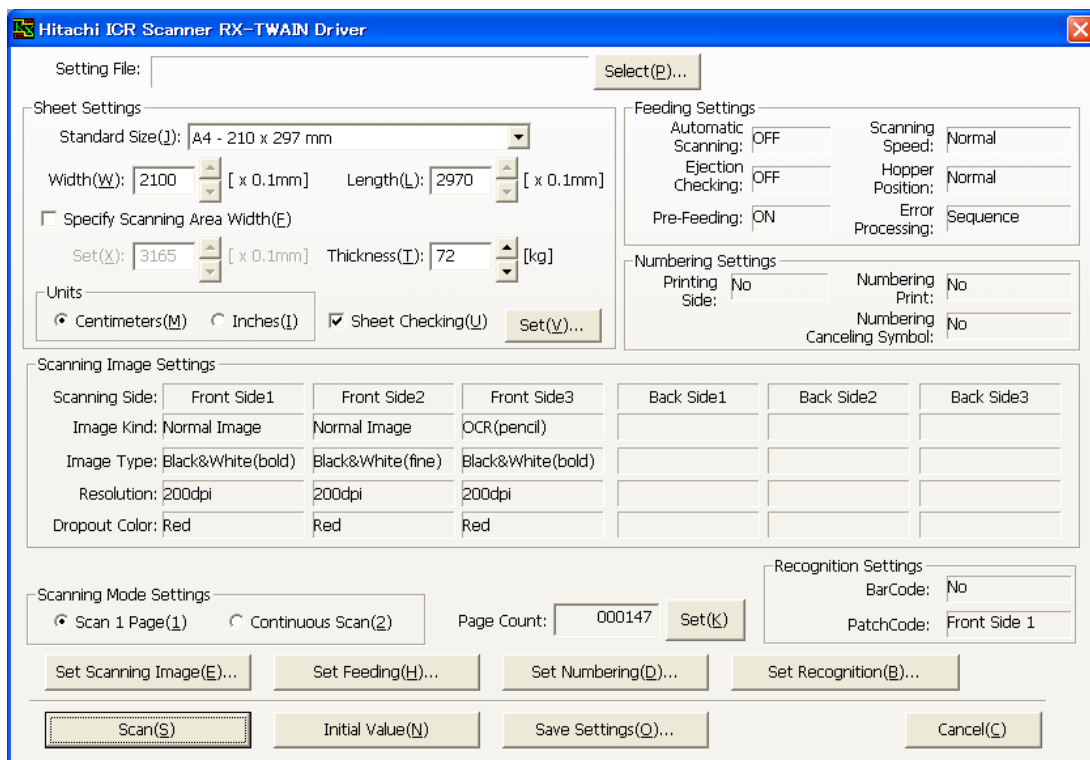


Figure 1.1 TWAIN User Interface Dialog box

1.TWAIN User Interface

Table 1.1 Settings and Functions of the TWAIN User Interface Dialog box

No.	Group	Item name	Description	Function
1	-	Setting File	Registration setting file name	If no existing registration is selected, blanks are displayed. Each parameter is initialized by the UI-based default value. The Select button is used to display the Selecting Parameter Settings Dialog box. Selecting a setting file displays the selected setting file name.
2	Sheet Settings	Standard Size	Letter - 8.5 x 11 in Letter (L) - 11 x 8.5 in Legal - 8.5 x 14 in A3 - 297 x 420 mm A4 - 210 x 297 mm A4 (L) - 297 x 210 mm A5 - 148 x 210 mm A5 (L) - 210 x 148 mm A6 - 105 x 148 mm A6 (L) - 148 x 105 mm A7 - 74 x 105 mm A7 (L) - 105 x 74 mm Specify Size	Selects the standard sheet size. The "Length" shows the vertical size of the selected sheet, and the "Width" shows the horizontal size. Selecting "Specify Size" allows you to edit "Length" and "Width" fields.
3		Width	Horizontal size of a sheet Unit: [0.1mm]	Enters the horizontal size of a sheet. The minimum and maximum values vary depending on the scanner specifications.
4		Length	Vertical size of a sheet Unit: [0.1mm]	Enters the vertical size of a sheet. The minimum and maximum values vary depending on the scanner specifications.
5		Specify Scanning Area Width	ON/OFF	Enables the scanning area width specification only when it is ON.
6		Set	Horizontal size of a sheet Unit: [0.1mm]	Enters the size of the scanning area width. Set this value to be larger than the width of the sheet in consideration of skew and other problems.
7		Thickness	Thickness of a sheet [kg]	Specifies the thickness of the sheet in units of kg.
8		Units	Centimeters Inches	Specifies the units of parameters to be displayed or saved. The unit during a setting is held on a per-parameter basis so that internal processing has no expansion in conversion error. Only one conversion is allowed.

Continued on Next Page

Continued

No.	Group	Item name	Description	Function
9	Sheet Settings	Sheet Checking	ON/OFF	Enables a sheet checking only
10		Set	Sheet Checking	When it is ON. Pressing the button displays the Sheet Checking Settings Dialog box.
11	Feeding Settings	Automatic Scanning	ON/OFF (Note 1)	Displays the contents set in the Feeding Settings Dialog box.
12		Ejection Checking	ON/OFF	
13		Pre-Feeding	ON/OFF	
14		Scanning Speed	Normal High Speed	
15		Hopper Position	Normal/Level1/Level2	
16		Error Processing	Sequence/ Non-Sequence/ Non-Sequence2	
17	Numbering Settings	Printing Side	No/Front Side	Displays the contents set in the Numbering Settings Dialog box.
18		Numbering Print	No/1 Place/2 Places	
19		Numbering Canceling Symbol	No/1 Place/2 Places	
20	Scanning Image Settings	Scanning Side	Front Side1/Front Side2/Front Side3/ Back Side1/Back Side2/Back Side3	Displays the contents set in the Image Settings Dialog box.
21		Image Kind	OCR (pencil) OCR (ballpoint pen) Normal Image	
22		Image Type	Black&White (fine) Black&White (bold) Halftone(HG) (Note 2) Halftone(FD) Halftone(ED) Grayscale(4 bit) Grayscale(8 bit) Color (24 bit)	
23		Resolution	100dpi/150dpi/200dpi 300dpi/400dpi/600dpi	
24		Dropout Color	None Red Blue Green Excluding Black	

Continued on Next Page

1.TWAIN User Interface

Continued

No.	Group	Item name	Description	Function
25	Scanning Mode Settings	Scanning Mode Settings	Continuous Scan Scan 1 Page	Continuous Scan: Scanning continues until the hopper becomes empty. Scan 1 Page: Scanning stops when one page is scanned. (Note 3)
26	-	Page Count	0 to 999999	Displays the page count. At starting, the previous value is taken over.
27		Set	-	Changes the page count.
28	Recognition Settings	BarCode	No	Displays the contents set in the Recognition Settings Dialog box.
29		PatchCode	Front Side1 Front Side2 Front Side3 Back Side1 Back Side2 Back Side3	
30	Control Button	Set Scanning Image	-	Pressing the button displays the Scanning Image Settings Dialog box.
31		Set Feeding	-	Pressing the button displays the Feeding Settings Dialog box.
32		Set Numbering	-	Pressing the button displays the Numbering Settings Dialog box.
33		Set Recognition	-	Pressing the button displays the Recognition Settings Dialog box.
34		Scan Scan Stop	-	Starts the process of scanning from the scanner. The scanned data is transferred to the application. Under the "Continuous Scan" setting, the display changes to the "Scan Stop" during scanning. Pressing the "Scan Stop" during scanning stops the scanning.
35		Save Settings	-	Pressing the button displays the Saving Parameter Settings Dialog box.
36		Initial Value	-	Pressing the button returns each parameter to the initial value.
37	Cancel	-	Pressing the button closes the TWAIN User Interface Dialog box.	

(Note 1)

Automatic Scanning is invalid with “No display mode” of the User interface of the TWAIN driver.
(Automatic Scanning is always OFF)

(Note 2)

HG : High Gradation FD : Fine Dot ED : Error Diffusion

(Note 3)

Continuous Scan is invalid with “No display mode” of the User interface of the TWAIN driver.
(Set the TW_CAPABILITY.Cap field to CAP_AUTOFEED and set the capability to TRUE.)

1.2 Sheet Checking Settings Dialog box

With the “Sheet Checking” being ON, press the “Set” button on the TWAIN User Interface Dialog box to display the Sheet Check Settings Dialog box as shown in Figure 1.2.

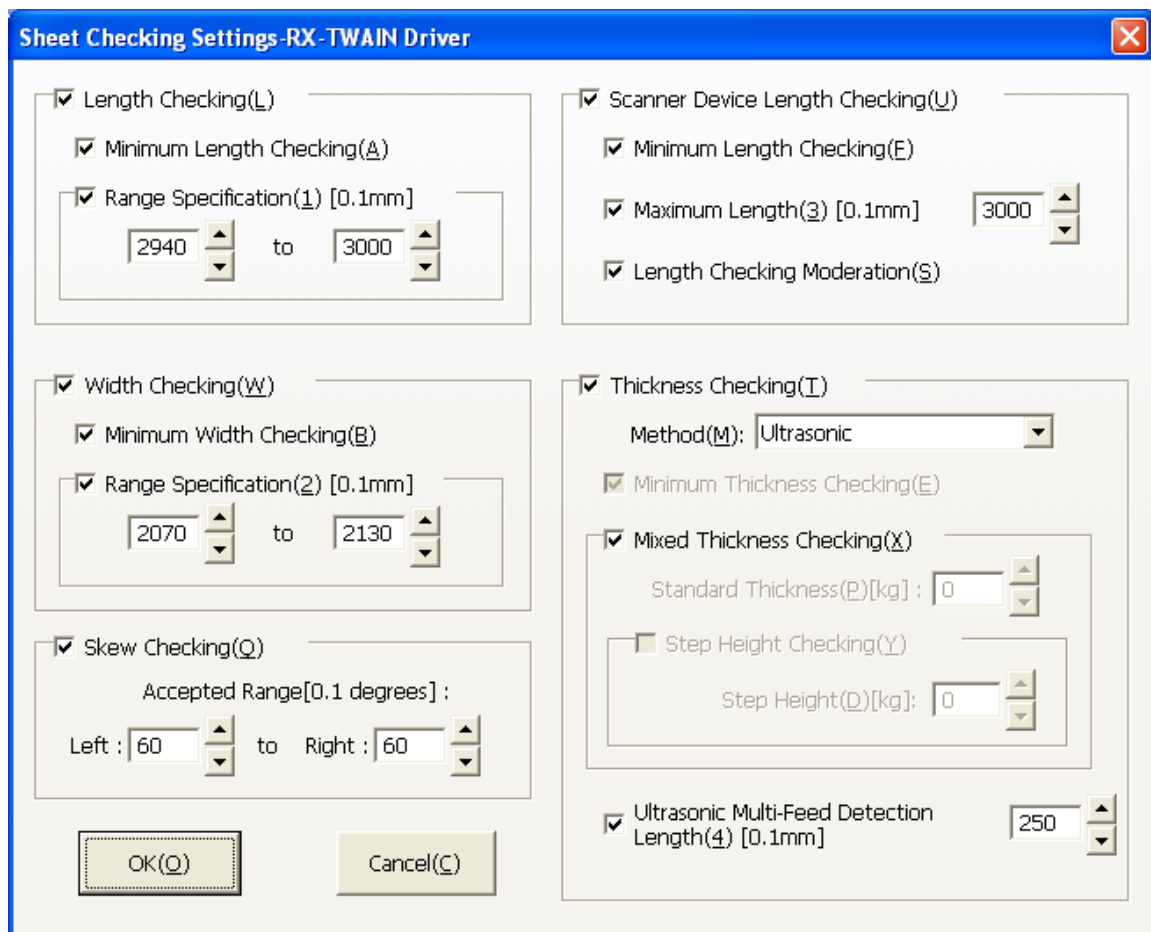


Figure 1.2 Sheet Checking Settings Dialog box

Table 1.2 Settings and Functions of the Sheet Checking Settings Dialog box

No	Group	Item name	Description	Function
1	Length Checking	Length Checking	ON/OFF	Enables a length check when it is ON. If no range is specified, an error occurs when at least 105% of the specified sheet size is reached.
2		Minimum Length Checking	ON/OFF	Enables a minimum checking when it is ON. The minimum value of the range input is activated.
3		Range Specification	ON/OFF Value range: (740- α) to (4200+ α)	Enables a check with the specified value range when it is ON.
4	Width Checking	Width Checking	ON/OFF	Enables a width check when it is ON. If no range is specified, an error occurs when at least 105% of the specified sheet size is reached.
5		Minimum Width Checking	ON/OFF	Enables a minimum checking when it is ON. The minimum value of the range input is activated.
6		Range Specification	ON/OFF Value range: (740- α) to (3050+ α)	Enables a check with the specified value range when it is ON.
7	Thickness Checking	Thickness Checking	ON/OFF	Enables a thickness checking when it is ON.
8		Method	Transmitted Light Ultrasonic	Specifies the method of a thickness check.
9		Minimum Thickness Checking	ON/OFF	Enables a minimum thickness check.
10		Mixed Thickness Checking (Note 1)	ON/OFF	Specifies the thickness of a sheet. The mixed check can be specified only when the method is Roller Displacement.
11		Standard Thickness (Note 1)	Standard	Specifies the standard value to check the sheet thickness.

Continued on Next Page

1.TWAIN User Interface

Continued

No.	Group	Item name	Description	Function
12	Thickness Checking	Step Height Checking (Note 1)	ON/OFF	Enables a mixed sheet thickness when it is ON.
13		Step Height (Note 1)	Step Height	Specifies the thickness used for the step height checking.
14		Ultrasonic Multi-Feed Detection Length	ON/OFF Value range: 250 to 3940	Enables an ultrasonic multi-feed detection with the specified value when it is ON.
15	Skew Checking	Skew Checking	ON/OFF	The ON option provides a skew check.
16		Left	Left side skew angle	Specifies the left side skew angle.
17		Right	Right side skew angle	Specifies the right side skew angle.
18	Scanner Device Length Checking	Scanner Device Length Checking	ON/OFF	Enables a length check on the scanner when it is ON.
19		Minimum Length Checking	ON/OFF	Enables a minimum length check when it is ON.
20		Maximum Length	ON/OFF Value range: (740- α) to (3050+ α)	Enables a check with the specified value when it is ON.
21		Length Checking Moderation	ON/OFF	Enables a length checking moderation when it is ON.
22	Control Button	OK	–	Pressing the button applies the setting contents and closes the dialog box.
23		Cancel	–	Pressing the button closes the dialog box without applying the setting contents.

(Note 1)

This setting is not used in HT-4139 Image Scanner.

1.3 Scanning Image Settings Dialog box

Press the “Set Scanning Image” button on the TWAIN User Interface Dialog box to display the Scanning Image Settings Dialog box as shown in Figure 1.3.

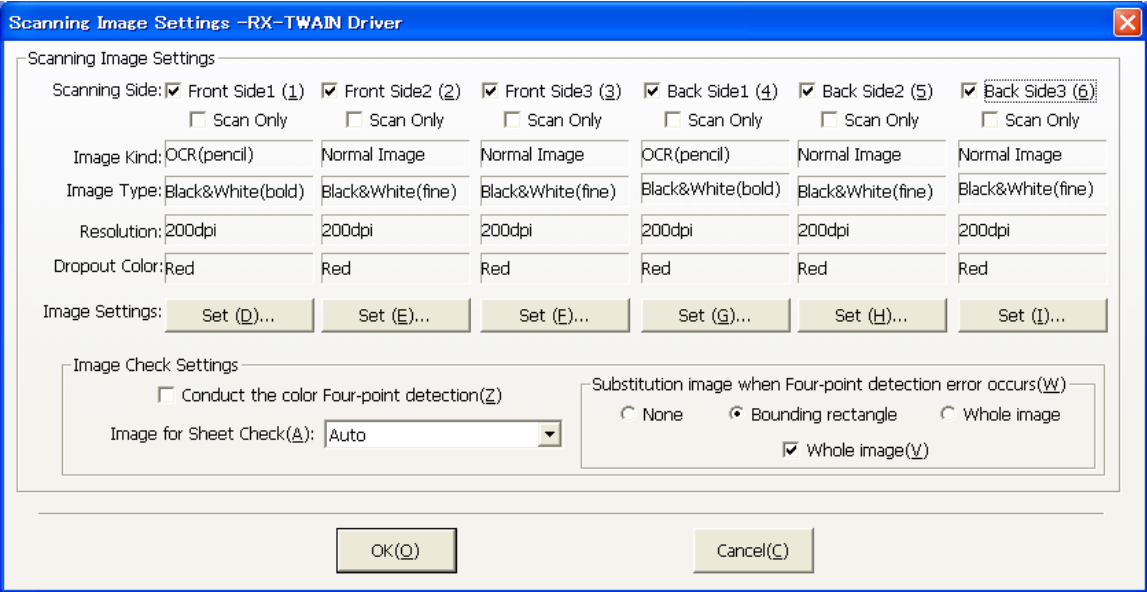


Figure 1.3 Scanning Image Settings Dialog box

Table 1.3 Settings and Functions of the Scanning Image Settings Dialog box

No.	Group	Item name	Description	Function
1	Scanning Image Settings	Scanning Side	ON/OFF	Specifies the scanning sheet side.
2		Scan Only	ON/OFF	Specify to use scanned images only for image check or use as output
3		Image Kind	Normal Image OCR (pencil) OCR (ballpoint pen)	Displays the specified image kind.
4		Image Type	When a "Normal Image" is selected: Black&White (fine) Black&White (bold) Halftone(HG) Halftone(FD) Halftone(ED) Grayscale(4 bit) Grayscale(8 bit) Color (24 bit)	Displays the specified image type. (note) HG : High Gradation FD : Fine Dot ED : Error Diffusion When an "OCR" image is selected: Black&White (bold)
5		Resolution	100dpi/150dpi/200dpi 300dpi/400dpi/600dpi	Displays the specified resolution.
6		Dropout Color	None Red Blue Green Excluding Black	Displays the specified dropout color.
7		Image Settings	Set Front Side * Set Back Side *	Displays the Image Settings Dialog box for each scanning side.

Continued on Next Page

Continued

No.	Group	Item name	Description	Function
8	Image Check Settings	Conduct the color Four-point detection	ON/OFF	In case of "ON": If image for the Four-point detection is color/gray, the image will not be converted to Black/White.
9		Image for Sheet Check	Auto Front Side 1 Front Side 2 Front Side 3 Back Side 1 Back Side 2 Back Side 3 Front Side 1 +Back Side 1 Front Side 1 +Back Side 2 Front Side 1 +Back Side 3 Front Side 2 +Back Side 1 Front Side 2 +Back Side 2 Front Side 2 +Back Side 3 Front Side 3 +Back Side 1 Front Side 3 +Back Side 2 Front Side 3 +Back Side 3	In case of Automatic: Scanned side is automatically set as the Reference Image. (OCR image will be set as reference image but there is not OCR image, the first image is set as this) It will be an error if reference image is not specified.
10		Substitution image when Four-point detection error occurs	None Bounding rectangle Whole image	Specify a method of calculation when the 4-point detection failed.
11		Whole image	ON/OFF	To specify if get whole image when failed to get a Bounding rectangle.
12	Control Button	OK	–	Pressing the button applies the set contents and closes the dialog box.
13		Cancel	–	Pressing the button closes the dialog box without applying the set contents.

1.4 Image Settings Dialog box

Press the “Set Front Side **” button or the “Set Back Side **” button on the Scanning Image Settings Dialog box to display the Image Settings Dialog box as shown in Figure 1.4.

Image setting dialog has 3 tabs, “Scanning Image”, “Image Processing”, “Background /FrameDrawing”. to switching setting.

1.4.1 Scanning Image

When the " Scanniing image" tab on the image setting screen is pushed, the image setting dialog of Figure 1.4 is displayed.

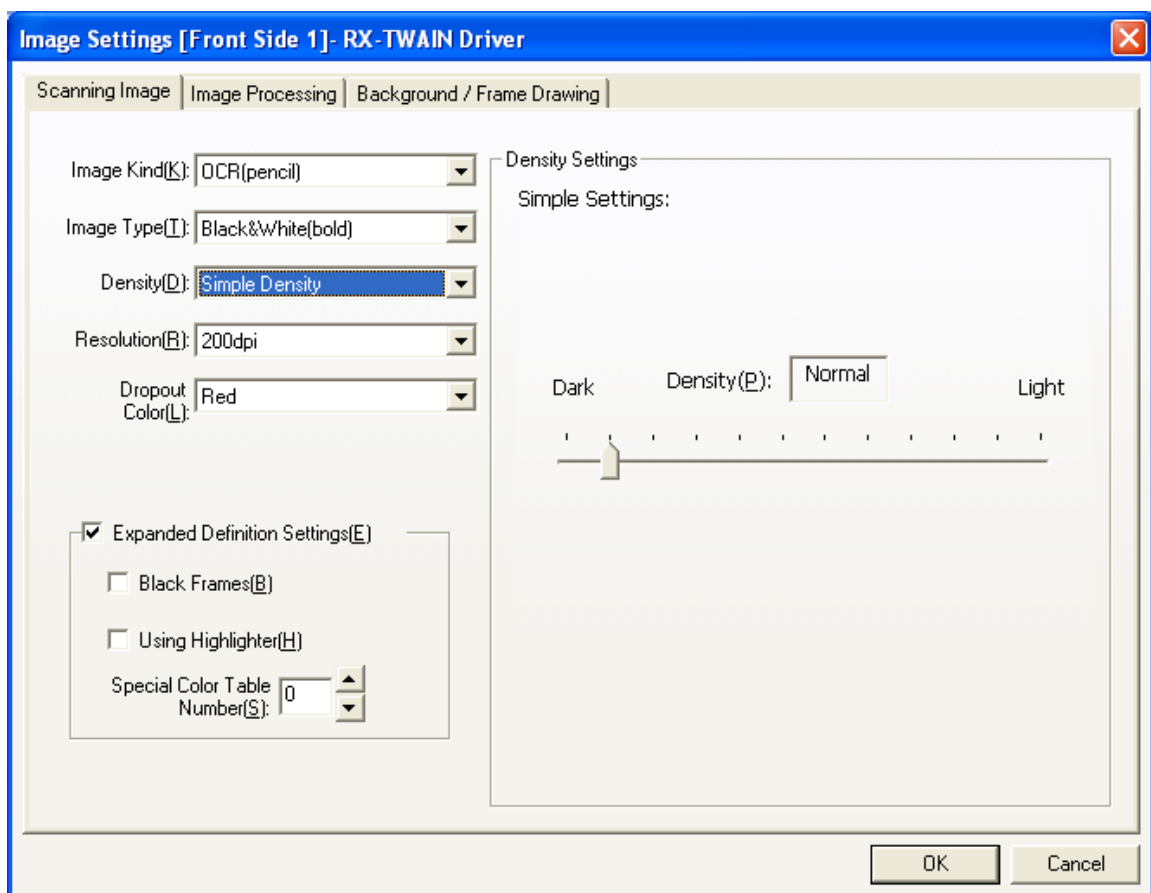


Figure 1.4 Image Settings Dialog box(Scanning Image)

Table 1.4 Settings and Functions of the Image Settings Dialog box (Scanning Image)

No.	Group	Item name	Description	Function
1		Image Kind	Normal Image OCR (pencil) OCR (ballpoint pen)	Selects the image kind.
2		Image Type	When a normal image is selected: Black&White (fine) Black&White (bold) Halftone (High Gradation:HD) Halftone (Fine Dot:FD) Halftone (Error Diffusion:ED) Grayscale(4 bit) Grayscale(8 bit) Color (24 bit) When an OCR image is selected: Black&White (bold)	Selects the image type.
3		Density	Standard/Simple Density/Detailed Density	Specifies the density. The Simple or Detailed density requires you to specify a value separately.
4		Resolution	100dpi 150dpi 200dpi 300dpi 400dpi 600dpi	Specifies the resolution. However, if "High Speed" is selected as the scanning speed, only the 100 dpi option can be selected.
5		Dropout Color	None Red Blue Green Excluding Black	Specifies the dropout color.

Continued on Next Page

1.TWAIN User Interface

Continued

No.	Group	Item name	Description	Function
6	Expanded Definition Settings	Expanded Definition Settings	ON/OFF	Enables the expanded definition Settings.
7		Black Frames	ON/OFF	On the OCR scanner, ruled lines tend to be broken. This specification minimizes such a problem.
8		Using Highlighter	ON/OFF	Specifies the highlighter, This is a function to suppress errors by the highlighter.
9		Special Color Table Number	0 to 255	Specifies the special color table number. At present, the numbers from 0 to 6 are enabled, but the specified values are not guarded. This specification is enabled only when "Dropout Color" is specified as "None".
10	Density Settings			Setting varies with image type and density setting. For detail, refer to description of density specifications described later.
11	Control Button	OK	–	Pressing the button applies the set contents and closes the dialog box.
12		Cancel	–	Pressing the button closes the dialog box without applying the set contents.

1.4.1.1 Density Settings

Specifying the “Simple Density” for the density specification displays the “Simple Density Settings” tab shown in (1).

Specifying “Detailed Density” displays the “Detailed Density Settings” tab shown in (2).

(1) Simple Density Settings

(A) Normal Image

The 5-step slider control shown in Figure 1.5 is used to specify “Simple Density” when the “Image Kind” is “Normal Image”.

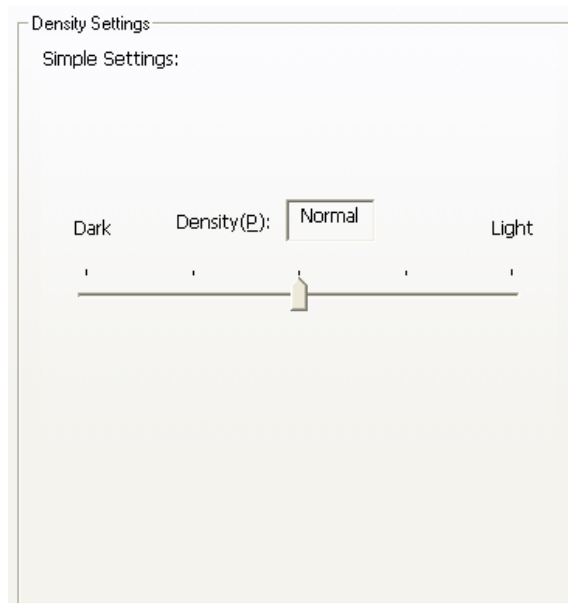


Figure 1.5 Simple Density (1)

B) OCR (pencil) and OCR (ballpoint pen)

The 12-step slider control shown in Figure 1.6 is used to specify Simple Density when the “Image Kind” is “OCR (pencil)” or “OCR (ballpoint pen)”.

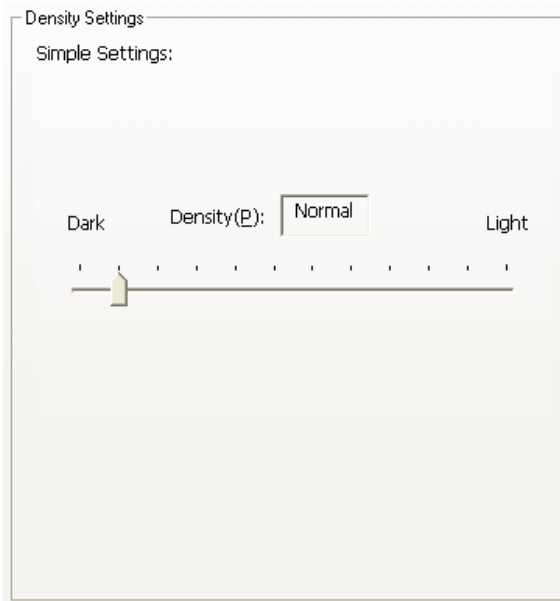


Figure 1.6 Simple Density (2)

(2) Detailed Density

(A) Black&White image

The three parameters, “Expanded Density”, “Contrast” and “Smoothing” shown in Figure 1.7 are used to specify the detailed density of black&white image when the “Image Kind” is “Normal Image” (black&white or halftone), “OCR (pencil)”, or “OCR (ballpoint pen)”. Pressing the “Initial Value” button returns it to the initial value.

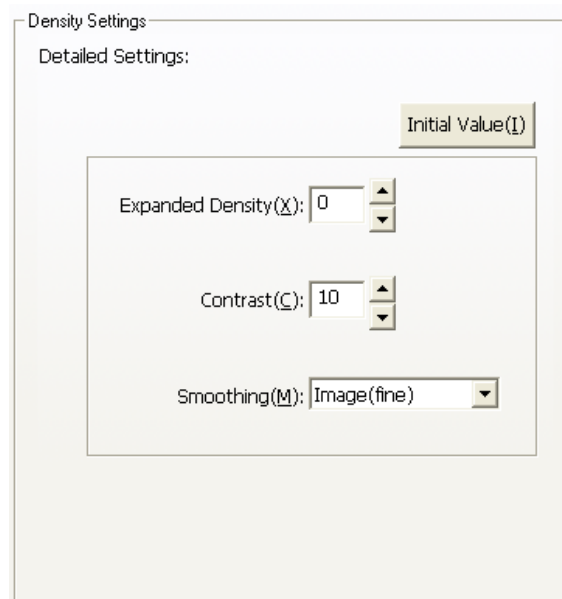


Figure 1.7 Detailed Density (1)

Table 1.5 Settings and Functions of Detailed Density (1)

No.	Group	Item name	Description	Function
1	Detailed Density	Expanded Density	A total of 14 steps ranging from Dark (0) to Light (13) Note: It is also possible to specify (14) and (15), which are special cases.	Specifies the expanded density. The expanded density setting allows you to specify fine images.
2		Contrast	A total of 16 steps ranging from Light (0) to Dark (15)	Specifies the contrast. The contrast setting allows you to specify fine images. Note: Standard models at present support the range from Light (5) to Dark (15).
3		Smoothing	OCR (bold) Image (fine)	Specifies the smoothing. The smoothing setting allows you to specify fine images. The OCR (bold) smoothing is suitable for character recognition. The Image (fine) smoothing is suitable for sheets when they need faithful images.
4		Initial Value	Initialization	Returns each of three parameters (Expanded Density, Contrast and Smoothing) to the initial value.

(B) Normal Image (Gray)

The three parameters, “Highlight”, “Shadow” and “Gamma” shown in Figure 1.8 are used to specify the detailed density when the image kind is “Normal Image” and the image type is “Gray”. Pressing the “Initial Value” button returns it to the initial value.

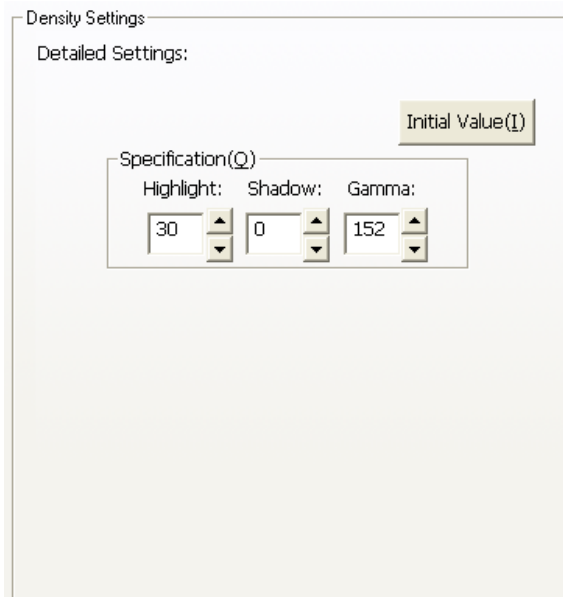


Figure 1.8 Detailed Density (1)

Table 1.6 Settings and Functions of Detailed Density (2)

No.	Group	Item name	Description	Function
1	Detailed Density	Highlight	Highlight value	Specifies the highlight value. The value that can be specified is an integer from -256 to 256.
2		Shadow	Shadow value	Specifies the shadow value. The value that can be specified is an integer from -128 to 128.
3		Gamma	Gamma value	Specifies the gamma value. The value that can be specified is an integer from 30 to 500.
4		Initial Value	Initialization	Returns each of three parameters (Highlight, Shadow and Gamma) to the initial value.

(C) Normal Image (Color)

The three parameters, “Highlight”, “Shadow” and “Gamma” shown in Figure 1.9 are used to specify the detailed density when the image kind is “Normal Image” and the image type is “Color”. Additionally, “Coloring” is specified for setting all colors.

Pressing the “Initial Value” button returns it to the initial value.

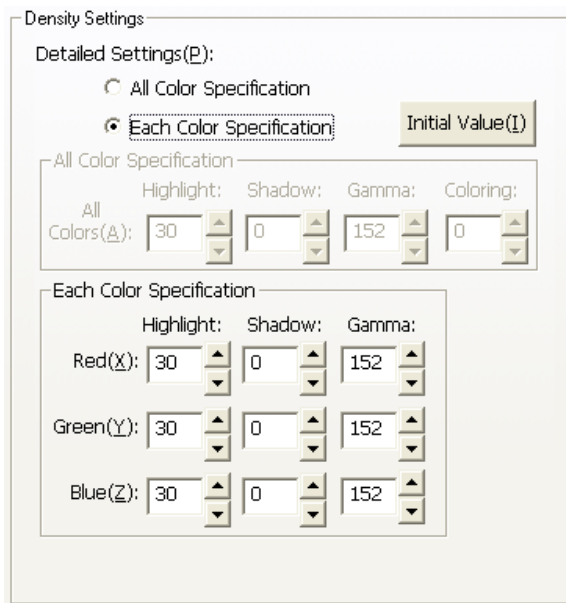


Figure 1.9 Detailed Density Settings for Multi-Value Images

Table 1.7 Settings and Functions of Detailed Density Settings for Multi-Value Images

No.	Group	Item name	Description	Function
1	Detailed Settings	Detailed Settings	All Color Specification Each Color Specification	Selects whether to specify all colors or each color for the density setting.
2	All Colors	Highlight	Highlight value -128 to 128	Specifies the highlight value with RGB.
3		Shadow	Shadow value -128 to 128	Specifies the shadow value with RGB.
4		Gamma	Gamma value 30 to 500	Specifies the gamma value with RGB.
5		Coloring	Coloring value -128 to 128	Specifies the coloring value with RGB.
6	Each Color	Highlight	Highlight value -256 to 256	Specifies the red highlight value.
7	Specification Red	Shadow	Shadow value -128 to 128	Specifies the red shadow value.
8		Gamma	Gamma value 30 to 500	Specifies the red gamma value.
9	Each Color Specification Green	Highlight	Highlight value -256 to 256	Specifies the green highlight value.
10		Shadow	Shadow value -128 to 128	Specifies the green shadow value.
11		Gamma	Gamma value 30 to 500	Specifies the green gamma value.
12	Each Color	Highlight	Highlight value -256 to 256	Specifies the blue highlight value.
13	Specification Blue	Shadow	Shadow value -128 to 128	Specifies the blue shadow value.
14		Gamma	Gamma value 30 to 500	Specifies the blue gamma value.
15	Control Button	Initial Value	Initialization of selected active parameters	Returns all of the active parameters, which are either all colors specified or each color specified, to the initial value.

1.4.2 Image Processing

When the " Image Processing " tab on the image setting screen is pushed, the image setting dialog of Figure 1.10 is displayed.

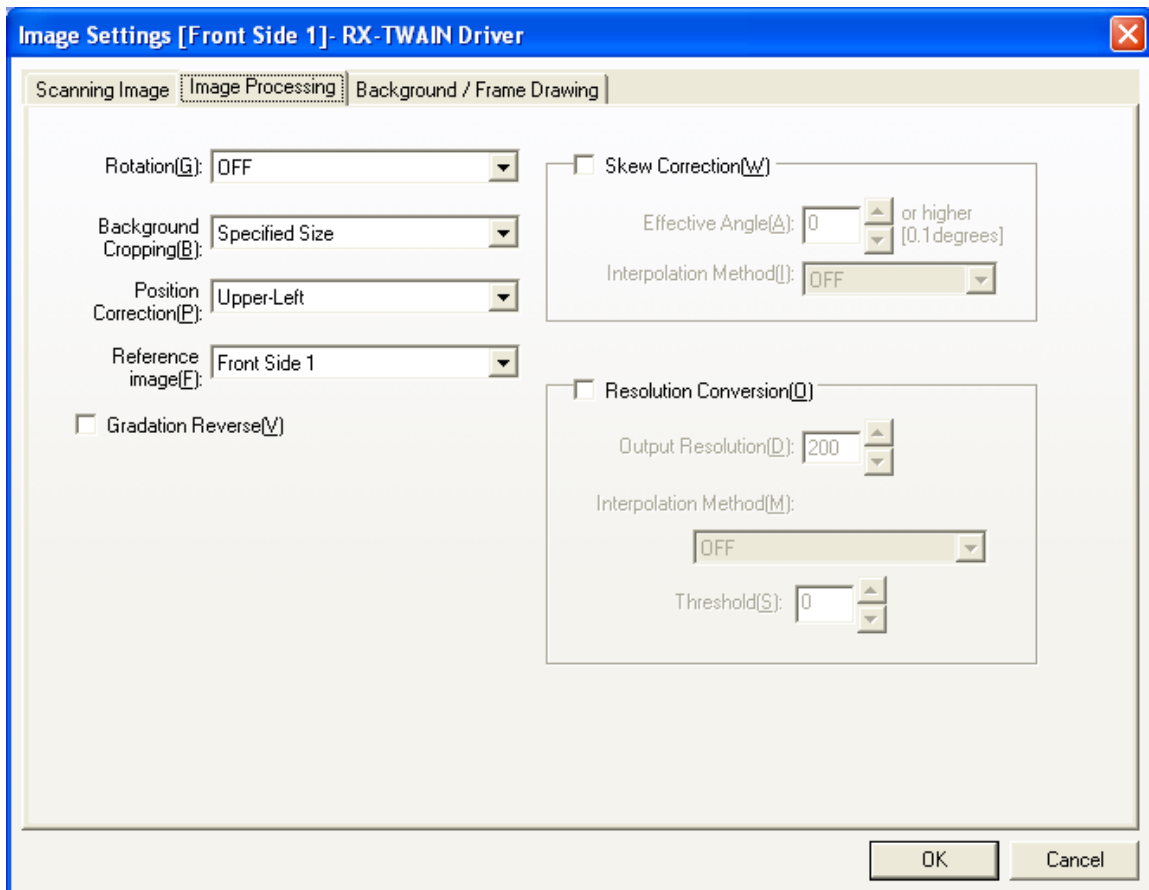


Figure 1.10 Image Settings Dialog box(Image Processing)

Table 1.8 Settings and Functions of the Image Settings Dialog box (Image Processing)

No.	Group	Item name	Description	Function
1		Rotation	OFF 90 degrees (clockwise) -90 degrees (counterclockwise) 180 degrees	Specifies the angle of rotation.
2		Background Cropping	OFF Detected Size Specified Size	Specifies whether to crop the background and the size of cropping.
3		Position Correction	Upper-Left Detection-Sized Center	This is disabled if the size specification is not specified for background.
4		Reference mage	Front Side 1 Front Side 2 Front Side 3 Back Side 1 Back Side 2 Back Side 3	Specify a reference image
5		Gradation Reverse	ON/OFF	Reverses the image gradation.
6	Skew Correction	Skew Correction	ON/OFF	Specifies whether to perform a skew correction.
7		Effective Angle	0 to 90 degrees	The skew is corrected if the specified angle is exceeded.
8		Interpolation Method	OFF Interpolation1	Specifies the interpolation method for a skew correction.
9	Resolution Conversion	Resolution Conversion	ON/OFF	Enables a resolution conversion when it is ON.
10		Output Resolution	50 to 600	Specifies the output resolution.
11		Interpolation Method	OFF Average Interpolation Bilinear Interpolation Adjacent Point Interpolation Preserve White Preserve Black Bicubic Interpolation	Specifies the interpolation method for a resolution conversion.
12		Threshold	0 to 100	Specifies the threshold when "Interpolation Method" is "Preserve White" or "Preserve Black"
13	Control Button	OK	–	Pressing the button applies the set contents and closes the dialog box.
14		Cancel	–	Pressing the button closes the dialog box without applying the set contents.

1.4.3 Background /Frame Drawing

When the " Background /Frame Drawing " tab on the image setting screen is pushed, the image setting dialog of Figure 1.11 is displayed.

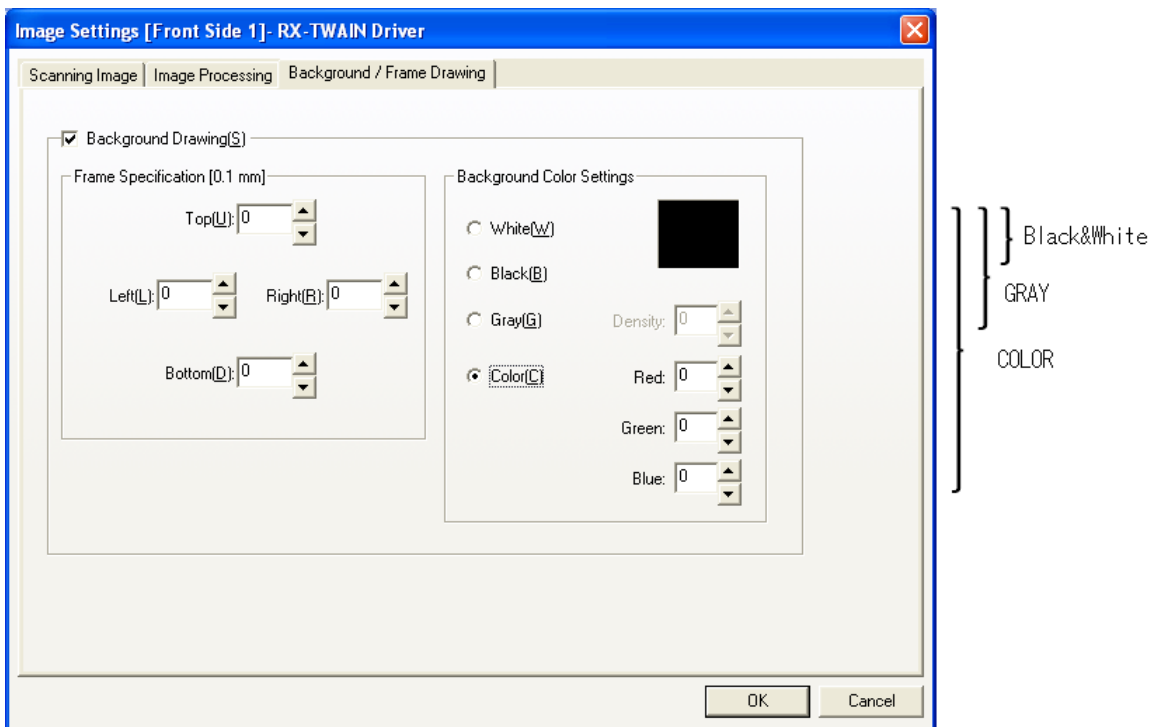


Figure 1.11 Image Settings Dialog box(Background /Frame Drawing)

Table 1.9 Settings and Functions of the Image Settings Dialog box (Background /Frame Drawing)

No.	Group	Item name	Description	Function
1	Background/Frame Drawing	Background Drawing	ON/OFF	Draws the background. Draws the background with the color specified in the displayed dialog box when the "Set Color" button is pressed.
2		Frame Specification	Top	Specified in units of 0.1 mm. Specifies the height of a frame as measured from the top of a sheet.
3			Left	Specified in units of 0.1 mm. Specifies the width of a frame as measured from the left of a sheet.
4			Right	Specified in units of 0.1 mm. Specifies the width of a frame as measured from the right of a sheet.
5			Bottom	Specified in units of 0.1 mm. Specifies the height of a frame as measured from the bottom of a sheet.
6	Color Settings	White	ON/OFF	Specifies the background/frame drawing color to white.
7		Black	ON/OFF	Specifies the background/frame drawing color to black.
8		Gray	ON/OFF Density (Gray, 4 bit): 0 to 15 Density (Gray, 8 bit): 0 to 255	Specifies the background/frame drawing color to gray.
9		Color	ON/OFF Red: 0 to 255 Green: 0 to 255 Blue: 0 to 255	Specifies the background/frame drawing color to color.
10	Control Button	OK	–	Pressing the button applies the set contents and closes the dialog box.
11		Cancel	–	Pressing the button closes the dialog box without applying the set contents.

1.5 Feeding Settings Dialog box

Press the “Set Feeding” button on the TWAIN User Interface Dialog box to display the Feeding Settings Dialog box as shown in Figure 1.12.

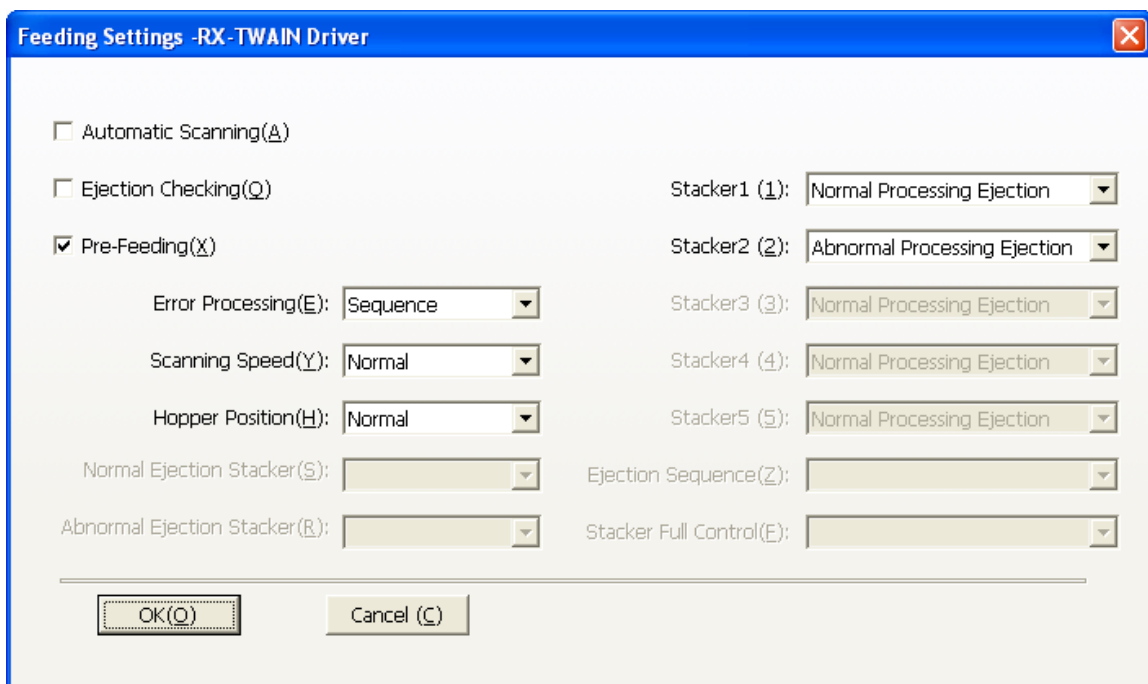


Figure 1.12 Feeding Settings Dialog box

The details (the items that can be specified or their contents) of this dialog box vary depending on the type of scanner.

Table 1.10 Settings and Functions of the Feeding Settings Dialog box

No.	Group	Item name	Description	Function
1	-	Automatic Scanning	ON/OFF	Enables automatic scanning when it is ON. The setting that automatic scanning is "OFF" is fixed in the non-UI mode.
2	-	Ejection Checking	ON/OFF	Enables ejection checking when it is ON.
3	-	Pre-Feeding	ON/OFF	Enables pre-feeding when it is ON.
4	-	Error Processing	Sequence/ Non-Sequence/ Non-Sequence2	Sequence: Operation will be stopped at scanning error. Non-Sequence: Eject sheet to specified stacker and continue scanning at scanning error Non-Sequence2: Eject sheet to specified stacker and continue scanning at following errors. - Abnormal mixed length sheet - Abnormal sheet thickness - Abnormal sheet length - Short gap error - Detection of multiple feeding by ultrasonic sensor - Ultrasonic sensor error
5	-	Scanning Speed	Normal High Speed(100dpi)	Specifies the scanning speed.
6	-	Hopper Position	Normal Level1 Level2	Specifies the hopper position.
7	-	Normal Ejection Stacker (Note 2)	A Stacker R Stacker	Specifies the stacker to eject at the normal processing.
8	-	Abnormal Ejection Stacker (Note 2)	A Stacker R Stacker	Specifies the stacker to eject at the error processing. (Note 1)
9	-	Stacker *	Normal Processing Ejection Abnormal Processing Ejection Unused	Specifies the stacker to eject at the normal and abnormal processing when two or more stackers exist. (Note 1)

Continued on Next Page

1.TWAIN User Interface

Continued

No.	Group	Item name	Description	Function
10	-	Ejection Sequence (Note 2)	Auto From top to bottom From bottom to top	Specifies the ejection sequence in the ejection group.
11	-	Stacker Full Control (Note 2)	Suppressing Sheet Scanning Immediate Stop	Specifies the control when the stacker becomes full.
12	Control Button	OK	–	Pressing the button applies the set contents and closes the dialog box.
13		Cancel	–	Pressing the button closes the dialog box without applying the set contents.

(Note 1)

Regardless of the settings in this specification, fixed stackers are used for the recovery from a jam or similar problem.

(Note 2)

This setting is not used in HT-4139 Image Scanner.

1.6 Numbering Settings Dialog box

Press the “Set Numbering” button on the TWAIN User Interface Dialog box to display the Numbering Settings Dialog box as shown in Figure 1.13.

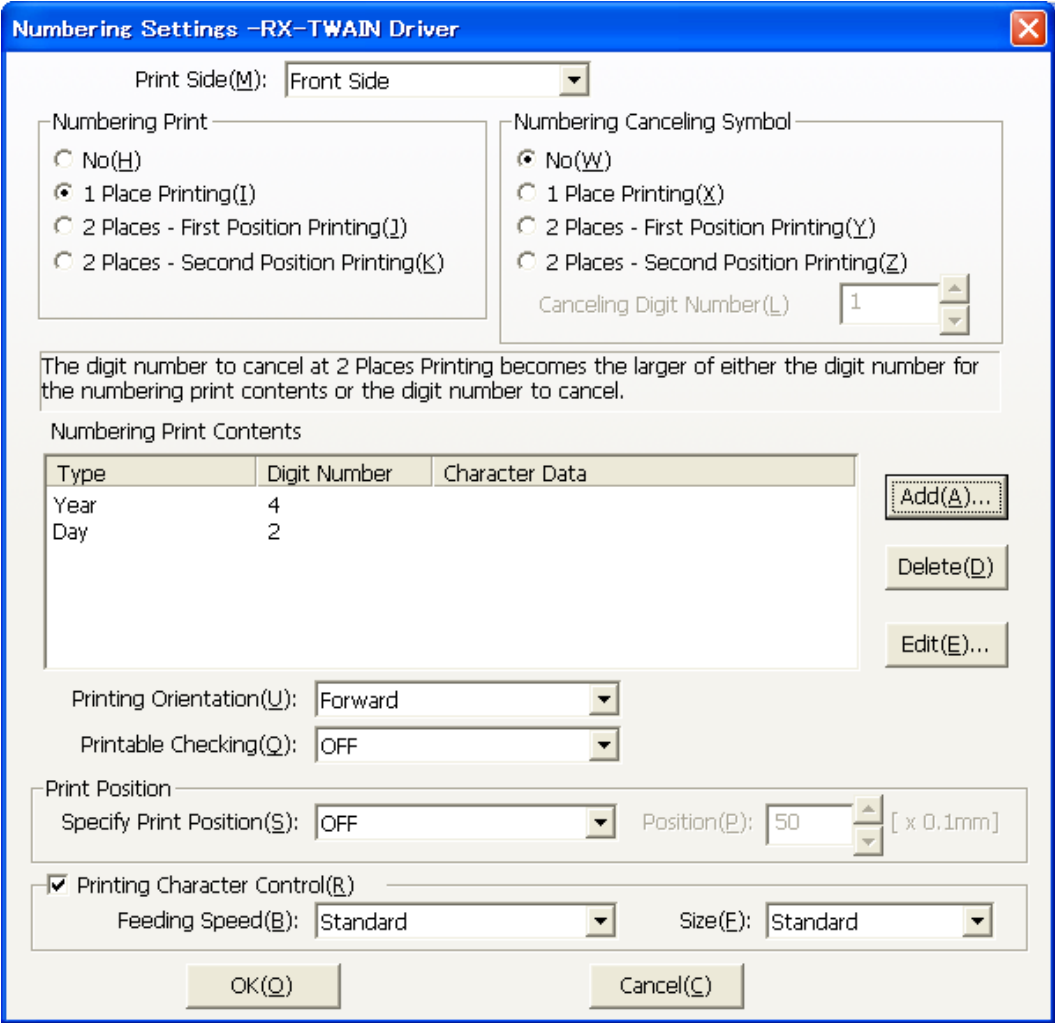


Figure 1.13 Numbering Settings Dialog box

Table 1.11 Settings and Functions of the Numbering Settings Dialog box

No	Group	Item name	Description	Function
1	–	Print Side	Front Side	Specifies the print side for numbering.
2	Numbering Print	Numbering Print	No	Specifies the printing position for numbering.
3	Numbering Canceling Symbol	Numbering Canceling Symbol	1 Place Printing 2 Places - First Position Printing 2 Places - Second Position Printing	Specifies the printing position for canceling numbering.
4		Canceling Digit Number	Digit Number to Cancel	Specifies the digit number to cancel for numbering. (Note 1)
5	Numbering Print Contents	Numbering Print Contents	–	Displays the contents specified in Numbering Data Settings.
6		Add	–	Adds the contents set in the Numbering Data Settings Dialog box.
7		Delete	–	Deletes the line selected in Numbering Print Contents.
8		Edit	–	The line selected in Numbering Print Contents is edited in the Numbering Data Settings Dialog box.
9	–	Printing Orientation	Forward Backward	Specifies the printing orientation for numbering.
10	–	Printable Checking	ON/OFF	Specifies whether to perform a Printable check.
11	Print Position	Specify Print Position	ON/OFF	Specifies whether to specify the printing position for numbering.
12		Position	–	Specifies the printing specification position.
13	Printing Character Control	Printing Character Control	ON/OFF	Enables the “Feeding Speed” and “Size” when it is ON.
14		Feeding Speed	Standard, Level1 (high speed) Level2 Level3 Level4 (low speed)	A higher level in feeding speed improves the printing quality but reduces the scanning speed.
15		Size	Standard Large	Specifies the size of printing characters.
16	Control Button	OK	–	Pressing the button applies the set contents and closes the dialog box.
17		Cancel	–	Pressing the button closes the dialog box without applying the set contents.

(Note 1)

The digit number to cancel at 2 Places Printing becomes the larger of either the digit number for the numbering print contents or the digit number to cancel.

1.6.1 Numbering Data Settings Dialog box

Press the “Add” button or the “Edit” button on the Numbering Settings Dialog box to display the Numbering Data Settings Dialog box as shown in Figure 1.14.

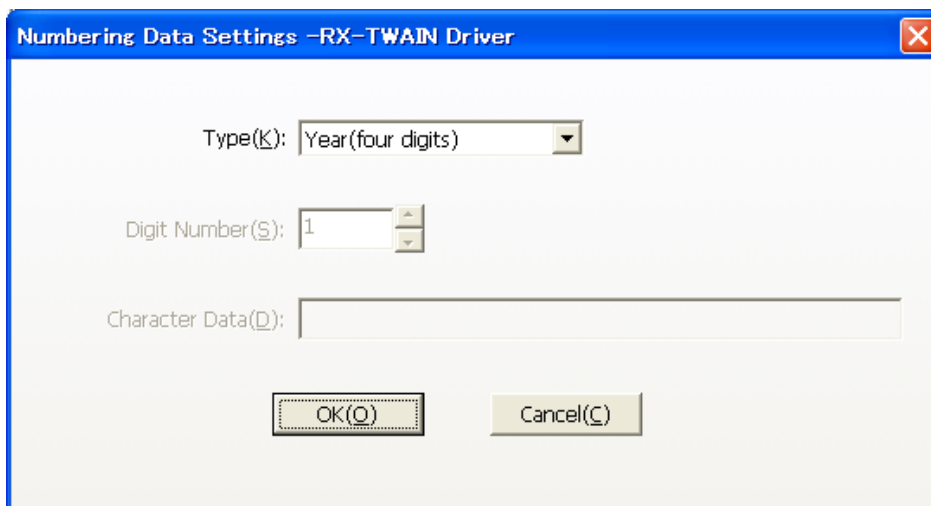


Figure 1.14 Numbering Data Settings Dialog box

Table 1.12 Settings and Functions of the Numbering Data Settings Dialog box

No.	Group	Item name	Description	Function
1	–	Type	Year (four digits) Year (two digits) Month (two digits) Day (two digits) Scanning Page Count Stacker Symbol Character Data	Specifies the type of the numbering data.
2	–	Digit Number	1 to 36	Specifies digit number when the type is the “Scanning Page Count”.
3	–	Character Data	–	Specifies the character data when the type is the “Character Data”. The following one-byte characters should be used: 0 to 9, A to Z, space, hyphen (-), and period (.). Additionally, the HT-4139 supports the following symbols: !"#\$%&'()*+,-./ :;<=>? @[¥]^_`{ }~「」
4	Control Button	OK	–	Pressing the button applies the set contents and closes the dialog box.
5		Cancel	–	Pressing the button closes the dialog box without applying the set contents.

1.7 Recognition Settings Dialog box

Press the "Set Recognition" button on the TWAIN User Interface Dialog box to display the Recognition Settings Dialog box as shown in Figure 1.15.

Recognition setting dialog has 2 tabs, "BarCode", "PatchCode". to switching setting.

1.7.1 BarCode

When the "BarCode" tab on the recognition setting screen is pushed, the recognition setting dialog of Figure 1.15 is displayed.

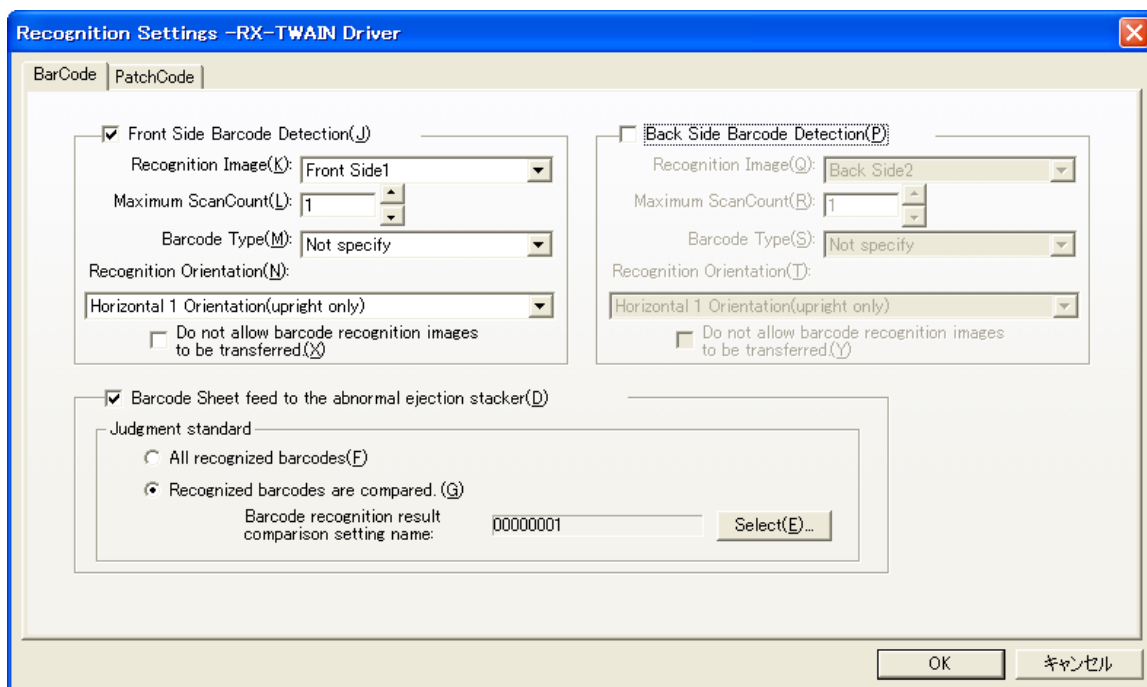


Figure 1.15 Recognition Settings Dialog box(BarCode)

Table1.13 Settings and Functions of the Recognition Dialog box

No.	Group	Item name	Description	Function
1	Front/Back Side Barcode Detection	Front/Back Side Barcode Detection	ON/OFF	Specifies whether to detect the barcode for the front/back side. It is possible to set either of the front and back sides.
2		Recognition Image	Front Side1 Front Side2 Front Side3 Back Side1 Back Side2 Back Side3	Specifies the image used for barcode recognition. The images that can be specified are the following: "OCR (pencil)", "OCR (ballpoint pen)", "Nomal Image -Black&White (fine)", and "Nomal Image -Black&White (bold)". It is recommended to select "Nomal Image -Black&White (fine)".
3		Maximum Scan Count	1 to 100	Specifies the maximum barcode count that can be recognized.
4		Barcode Type	EAN13 EAN8 Codabar Code39 Interleaved 2 of 5 Code128 Not specify	Specifies the barcode type.
5		Recognition Orientation	Horizontal 1 Orientation (upright only) Horizontal 2 Orientation (upright and reverse) Vertical 2 Orientation (upright and reverse) Vertical/Horizontal 4 Orientation (upright and reverse)	Specifies the orientation of the barcode to recognized
6		Do not allow barcode recognition images to be transferred.	ON/OFF	Specifies this when making the image used for barcode recognition be outside the target of TWAIN image acquisition. However, an error occurs if no other scanning side exists when it is specified.

Continued on Next Page

Continued

No.	Group	Item name	Description	Function
7	Barcode Sheet feed to the abnormal ejection stacker	Barcode Sheet feed to the abnormal ejection stacker	ON/OFF	Barcode Sheet feed to the abnormal ejection stacker when it is ON.
8		Judgment standard	All recognized barcodes Recognized barcodes are compared.	The judgment standard of the bar code sheet is specified. All recognized barcodes: When the bar code is normally recognized. Recognized barcodes are compared.: When the bar code is normally recognized.And When Barcode meet the conditions.
9		Barcode recognition result comparison setting name:	Setting Name	Displays the settings in the Selecting Barcode recognition result comparison Settings Dialog box. When the Judgment standard is a Recognized barcodes are compared, it becomes effective.
		Select	—	Pressing the button displays the Selecting Barcode recognition result comparison Settings Dialog box.
10	Control Button	OK	—	Pressing the button applies the set contents and closes the dialog box.
11		Cancel	—	Pressing the button closes the dialog box without applying the set contents.

1.7.1.1 Selecting Barcode recognition result comparison Settings

Press the “Select (Barcode recognition result comparison setting name)” button on the Recognition Settings Dialog box(BarCode)to display the Selecting Barcode recognition result comparison Settings Dialog box as shown in Figure 1.16.

Specify the barcode recognition result comparison setting name.

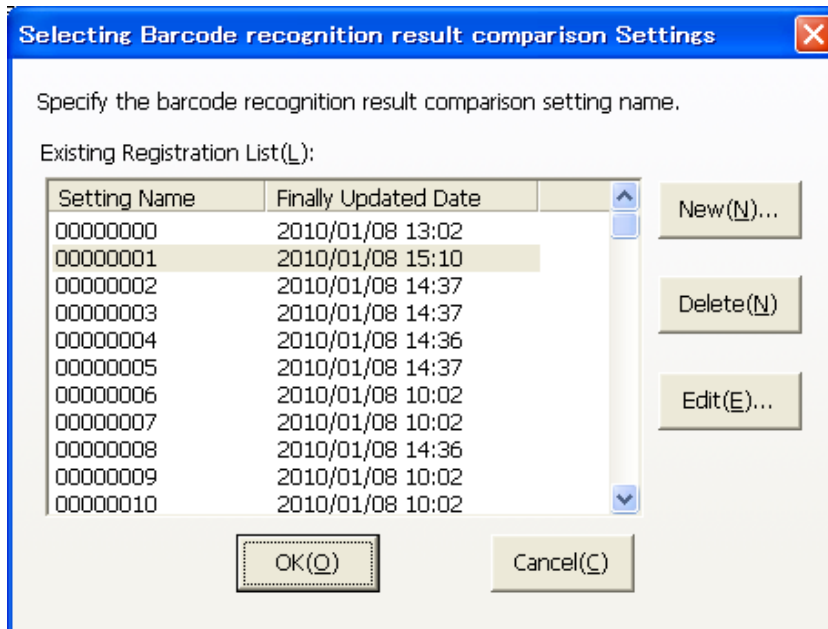


Figure 1.16 Selecting Barcode recognition result comparison Settings Dialog box

Table 1.14 Settings and Functions of the Selecting Barcode recognition result comparison Settings Dialog box

No.	Group	Item name	Description	Function
1		Existing Registration List	—	Displays the registered the barcode recognition result comparison setting name
2	Control Button	New	—	The barcode recognition result comparison setting is newly made by the Barcode recognition result comparison Settings dialog.
3		Delete	—	Deletes the line selected in barcode recognition result comparison setting. (Note 1)
4		Edit	—	The line selected in barcode recognition result comparison setting is edited in the Barcode recognition result comparison Settings Dialog box.
5		OK	—	Pressing the button applies the set contents and closes the dialog box.
6		Cancel	—	Pressing the button closes the dialog box without applying the set contents.

(Note 1)

The setting doesn't return even if the cancellation is pressed when deleting it with the "Delete" button.

1.7.1.2 Barcode recognition result comparison Settings

Press the “New” or “Edit” button on the Selecting Barcode recognition result comparison Settings Dialog box to display the Barcode recognition result comparison Settings Dialog box as shown in Figure 1.17.

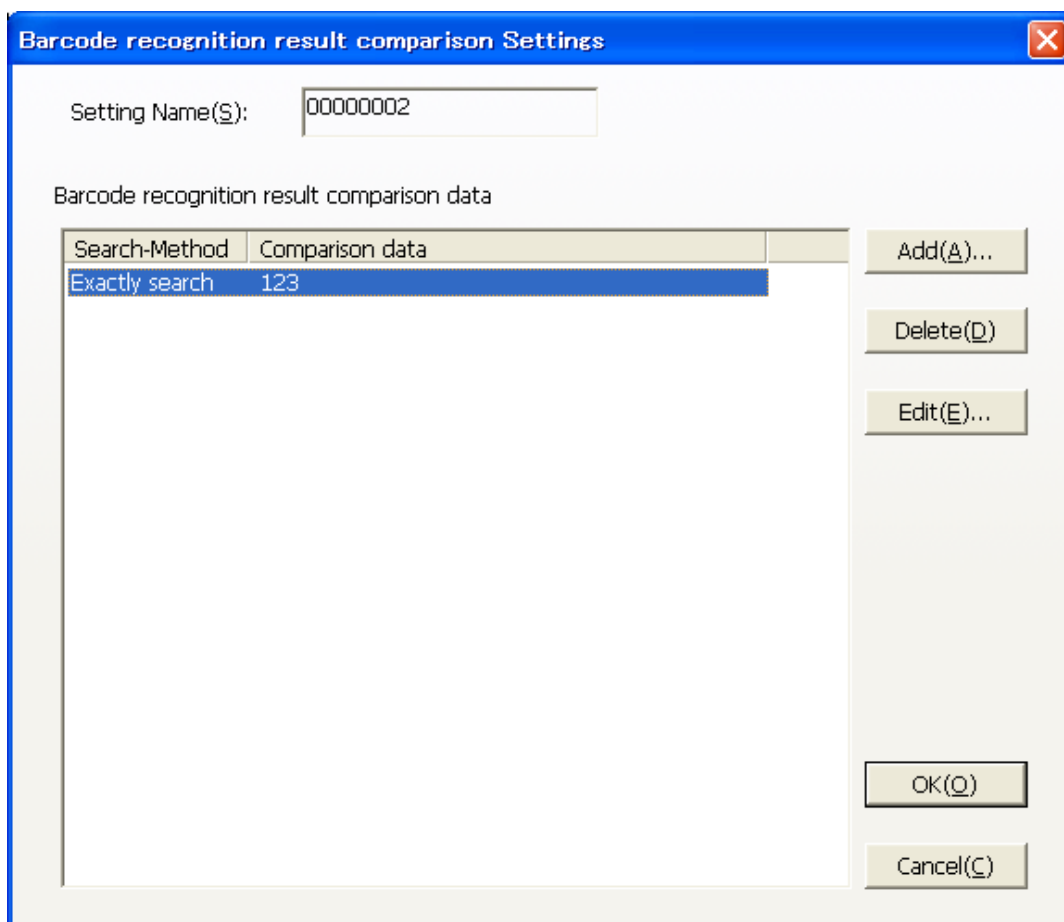


Figure 1.17 Barcode recognition result comparison Settings Dialog box

Table 1.15 Settings and Functions of the Barcode recognition result comparison Settings Dialog box

No.	Group	Item name	Description	Function
1		Setting Name		The Barcode recognition result comparison setting name is specified. The name to be registered is entered within 8 characters (as converted to the one-byte code). The following characters cannot be used. ¥/.,;*?"<>
2	Barcode recognition result comparison data	Search Method		Displays the contents set in the Comparison Barcode Settings Dialog box.
3		Comparison data		
4	Control Button	Add	—	Adds the contents set in the Comparison Barcode Settings Dialog box.
5		Delete	—	Deletes the line selected in Barcode recognition result comparison data.
6		Edit	—	The line selected in Barcode recognition result comparison data is edited in the Comparison Barcode Settings Dialog box.
7		OK	—	Pressing the button applies the set contents and closes the dialog box.
8		Cancel	—	Pressing the button closes the dialog box without applying the set contents.

1.7.1.3 Comparison Barcode Settings

Press the “Add” or ”Edit” button on the Barcode recognition result comparison Settings Dialog box to display the Comparison Barcode Settings Dialog box as shown in Figure 1.18.

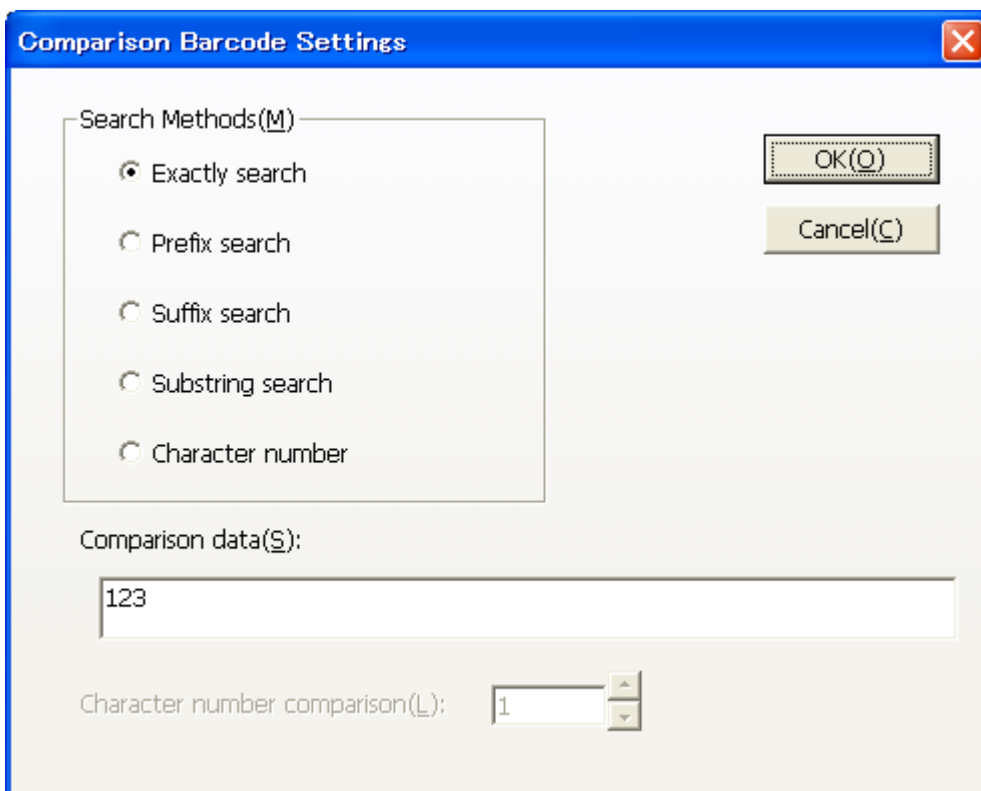


Figure 1.18 Comparison Barcode Settings Dialog box

Table 1.16 Settings and Functions of the Comparison Barcode Settings Dialog box

No.	Group	Item name	Description	Function
1		Search Methods	Exactly search Prefix search Suffix search Substring search Character number	Specifies the Search Methods.
2		Comparison data		The comparison is case sensitive. When the search method is not a character number, it becomes effective.
3		Character number comparison	1 to 256	When the search method is a character number, it becomes effective.
4	Control Button	OK	–	Pressing the button applies the set contents and closes the dialog box.
5		Cancel	–	Pressing the button closes the dialog box without applying the set contents.

1.7.2 PatchCode

When the " PatchCode " tab on the recognition setting screen is pushed, the recognition setting dialog of Figure 1.19 is displayed.

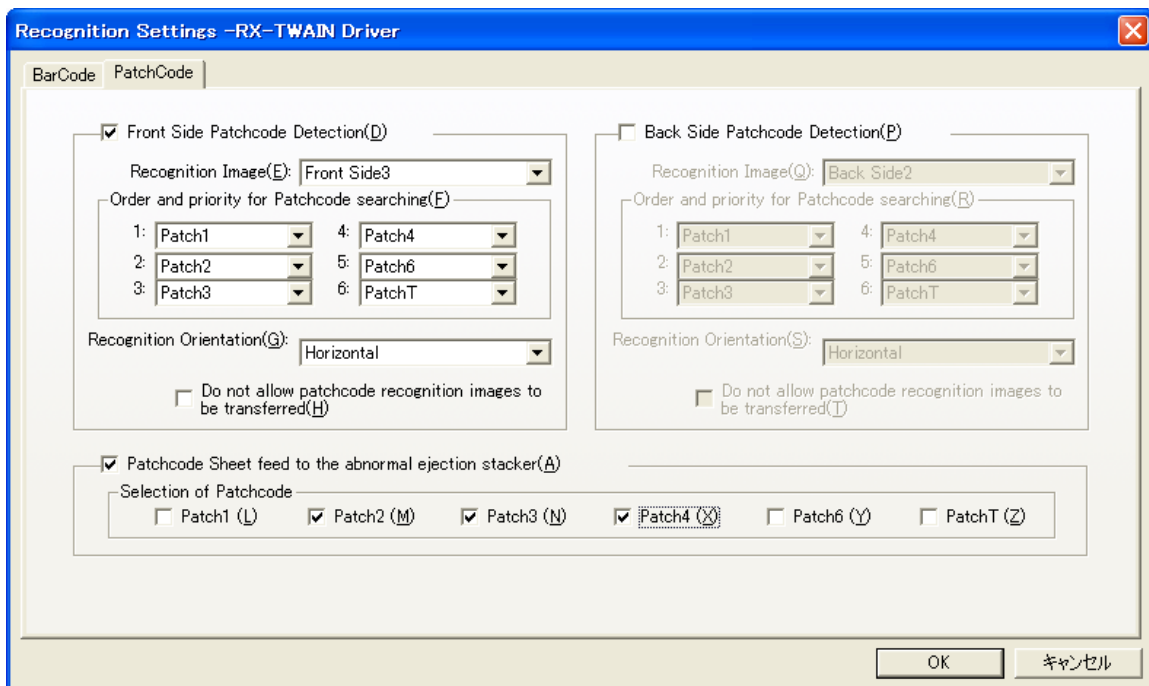


Figure 1.19 Recognition Settings Dialog box(PatchCode)

Table 1.17 Settings and Functions of the Recognition Settings Dialog box(PatchCode) Dialog box

No.	Group	Item name	Description	Function
1	Front/Back Side Barcode Detection	Front/Back Side Barcode Detection	ON/OFF	Specifies whether to detect the patchcode for the front/back side. It is possible to set either of the front and back sides.
2		Recognition Image	Front Side1 Front Side2 Front Side3 Back Side1 Back Side2 Back Side3	Specifies the image used for patchcode recognition. The images that can be specified are the following: "OCR (pencil)", "OCR (ballpoint pen)", "Nomal Image -Black&White (fine)", and "Nomal Image -Black&White (bold)". It is recommended to select "Nomal Image -Black&White (fine)".
3		Order and priority for Patchcode searching	PATCH 1 PATCH 2 PATCH 3 PATCH 4 PATCH 6 PATCHT	The Order and priority for Patchcode searching is specified. It is necessary to set one or more. It is necessary to specify it continuously. The overlapping specification cannot be done.
4		Recognition Orientation	Horizontal Vertical Horizontal – Vertical Vertical - Horizontal	The position of the recognized patch cord is specified. Horizontal: Top Vertical: Left Horizontal–Vertical: Top and Left Vertical-Horizontal: Left and Top
5		Do not allow patchcode recognition images to be transferred	ON/OFF	Specifies this when making the image used for patchcode recognition be outside the target of TWAIN image acquisition. However, an error occurs if no other scanning side exists when it is specified.

Continued on Next Page

1.TWAIN User Interface

Continued

No.	Group	Item name	Description	Function
6	Patchcode Sheet feed to the abnormal ejection stacker	Patchcode Sheet feed to the abnormal ejection stacker	ON/OFF	Patchcode Sheet feed to the abnormal ejection stacker when it is ON.
7		PATCH1	ON/OFF	The judgment standard of the patch code sheet is specified.
8		PATCH2	ON/OFF	
9		PATCH3	ON/OFF	
10		PATCH4	ON/OFF	
11		PATCH6	ON/OFF	
12		PATCHT	ON/OFF	
13	Control Button	OK	–	Pressing the button applies the set contents and closes the dialog box.
14		Cancel	–	Pressing the button closes the dialog box without applying the set contents.

1.8 Saving Scanning Parameter Settings Dialog box

Press the “Save Settings” button on the TWAIN User Interface Dialog box to display the Saving Parameter Settings Dialog box as shown in Figure 1.20.

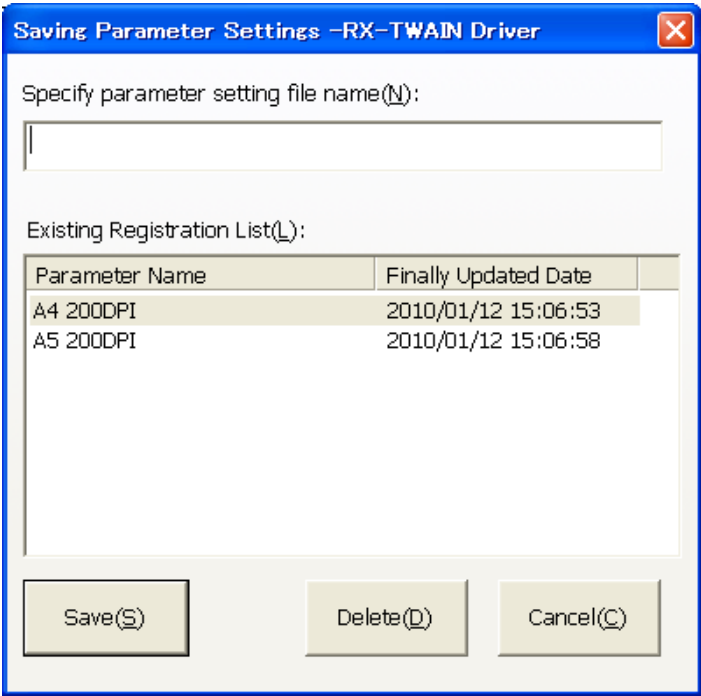


Figure 1.20 Saving Parameter Settings Dialog box

Table 1.18 Settings and Functions of the Saving Parameter Settings Dialog box

No.	Group	Item name	Description	Function
1	Setting Name Input	Setting Name Input Area	Input area for the setting name	The name to be registered is entered within 128 characters (as converted to the one-byte code). The following characters cannot be used. ¥/.,;*?"<>
2	–	Existing Registration List	–	Displays the registered parameters.
3	Control Button	Save	–	Pressing the button registers the entered parameter name and closes the dialog box. However, you cannot register non-existing parameters. If the parameter is deleted after registration, the previous or default operation setting works.
4		Cancel	–	Pressing the button closes the dialog box without doing anything.
5		Delete	–	Pressing the button deletes the selected parameter (or parameters).

1.9 Selecting Scanning Parameter Settings Dialog box

Press the “Select” button on the TWAIN User Interface Dialog box to display the Selecting Parameter Settings Dialog box as shown in Figure 1.21.

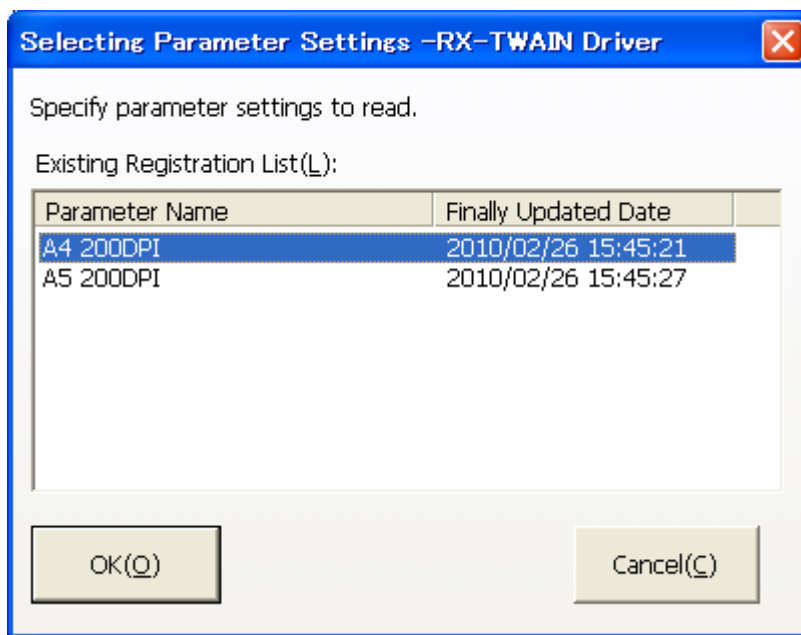


Figure 1.21 Selecting Parameter Settings Dialog box

Table 1.19 Settings and Functions of the Selecting Parameter Settings Dialog box

No.	Group	Item name	Description	Function
1	–	Existing Registration List		Displays the registered parameters.
2	Control Button	OK	–	Pressing the button reads the selected parameter.
3		Cancel	–	Pressing the button closes the dialog box without doing anything.

Chapter 2. Error Codes

2.1 Scanner Detailed Error Code List

Some of errors are not described in this error code list. Refer to error code in the scanner user's manual.

Table 2.1 Scanner Error Code (1/10)

No.	Error code	Cause	Recovery
1	20E91002 20EA1002 20EB1002 20EC1002	The device is reserved. (Other process is using the device.)	Close the program using the scanner and retry.
2	20E910X3 20EA1003 20EB1003 20EC1003	The device is warming up. (The device is not ready.)	Retry when the status lamp start blinking slowly.
3	20EB1004	The device is warming up. (Releasing from the energy saving mode)	
4	20E92001 20EA2001 20EB2001 20EC2001	No device is connected.	Check connection of scanner and retry.
5	21122810 21122811	Lighting time has reached to the threshold value.	Contact service personnel and replace with new lamp.
6	2112282X 2112283X 2112286X 2112287X	A lamp for scanning is not bright enough.	Clean the surface lower mirror and cover glass. If not recovered, contact service personnel.
7	2112284X 2112285X 2112288X 2112289X		Clean the surface lower mirror and cover glass. If not recovered, contact service personnel.
8	2112308X 2112309X X:0 to 6	Warning for contamination on the scanning head.	Clean the surface lower mirror and cover glass.
9	2112308X 2112309X X:8 to E		Clean the surface lower mirror and cover glass.

2. Error Code

Table Scanner Error Code (2/10)

No.	Error code	Cause	Recovery
10	21123301 21123302 21123304	Reaching the life of roller for scanning.	Possible to continue job. Contact service personnel.
11	21123310	Roller for scanning mechanism is contaminated.	Clean the roller.
12	21123510 21123511 21123512 21123513	Life of ink jet	Replace the ink jet.
13	21128F0X	Stacker n is full.	Stacker n is full. Remove sheets from stacker and resume process.
14	21128F1X		Stacker n is full. Remove sheets from stacker and resume process.
15	21128F2X		Close the door of stacker n and resume process.
16	21128F3X		Sheets remaining the stacker n. Remove sheets from stacker and resume process. Please confirm whether for the substacker to shift and to interrupt the detector When there is no Sheet.
17	2312D01X 2312D10X	Multiple feeding check error	Check if sheet and parameter are correct
18	24123AXX	The ultrasonic sensor error has occurred.(Non-Sequence2 specification)	If it happens again, contact service personnel.
19	241280XX	The Mixed sheet length error has occurred.	Remove jammed Sheet and resume scanning.
20	241281XX	The Sheet thickness error has occurred.	

Table Scanner Error Code (3/10)

No.	Error code	Cause	Recovery
21	241282XX	Sheet length error has occurred.(Detection by Photo)	Remove jammed Sheet and resume scanning.
22	241283XX	The Short gap error has occurred.(Non-Sequence2 specification)	If it happens again, contact service personnel.
23	241284XX	The Sheet thickness error has occurred.	Remove jammed Sheet and resume scanning.
24	241285XX	Sheet length error has occurred.(PC22)(Non-Sequence2 specification)	
25	241286XX	The Sheet thickness error has occurred.	
26	241289XX	The Sheet thickness error has occurred.	
27	24128AXX	An ultrasonic multi-feed detection error has occurred.(Non-Sequence2 specification)	
28	250F3000 250F4000 250F5000 250F60XX 250F700X 250F8000 250F900X 250FA001 250FBXX0	Scanner mode is different.	
29	264C0002	Un-scanned sheets remain in the scanner.	Continue scanning until hopper will be empty.
30	30129001 30129011	No sheets in the hopper.	Set sheets to continue scanning or finish process.
31	301296XX	Stop scanning(Stop switch)	Set sheets to continue scanning or finish process.
32	30129801	Stop scanning(Stop command)	

2. Error Code

Table Scanner Error Code (4/10)

No.	Error code	Cause	Recovery
33	32126006	Sheet jam	Remove jammed Sheet and resume scanning.
34	331218F0	Surface, scanning error	Remove jammed paper and reset them in the hopper to scan.
35	331218F1	Back, scanning error	
36	331220XX	Detector error	Clean the detector PC11.
37	331221XX		Clean the detector PC20
38	331222XX		Clean the detector PC22
39	3312233X		Clean the detector PC21
40	3312234X		Clean the detector PC21M
41	3312235X		Clean the detector PC21R
42	331223XX		Clean the detector PC21
43	331224XX		Clean the detector PC31
44	331225XX		Clean the detector PC41
45	331226XX		Clean the detector PC42
46	331227XX		Clean the detector PC43
47	3312273X		Clean the detector PCS1
48	3312274X		Clean the detector PCS2
49	3312275X		Clean the detector PCS3
50	3312276X		Clean the detector PCS4
51	3312277X		Clean the detector PCS5
52	331229XX		Light intensity error
53	3312313X	Detector error	Clean the detector PC51
54	3312314X		Clean the detector PC52
55	3312313X		Clean the detector PCF1
56	3312314X		Clean the detector PCF2
57	3312315X		Clean the detector PCF3
58	3312316X		Clean the detector PCF4
59	3312317X		Clean the detector PCF5
60	33123400	Elevator error	Check if sheets are set in the hopper properly.
61	33123401		Remove sheets from the hopper.
62	331236XX	Displacement meter error	Clean roller of displacement meter
63	33123680 33123AXX	Ultra sonic sensor error	Clean the Ultra sonic sensor

Table Scanner Error Code (5/10)

No.	Error code	Cause	Recovery
64	3312373X	Detector error	Clean the detector PC12
65	3312383X		Clean the detector PCE1
66	3312384X		Clean the detector PCE2
67	3312385X		Clean the detector PCE3
68	3312386X		Clean the detector PCE4
69	3312387X		Clean the detector PCE5
70	33124000	Sheet is ejected to the wrong stacker (A).	Stack sheets on the correct stacker. If this happens frequently, contact service personnel.
71	33124400	Sheet is ejected to the wrong stacker (R).	
72	33124401 33124412 33124423 33124445	The sheet specified to exhaust it to stacker m was exhausted from m to the stacker in the back (since n).(m,n is stacker number)	
73	33124410 33124420 33124421 33124430 33124431 33124432 33124434 33124440 33124441 33124442 33124443 3312445X	The slip specified to exhaust it to stacker m was exhausted to stacker n before m. (m,n is stacker number)	Please insert the sheet with a correct stacker.
74	3312470X	Detector error	Clean the detector PCMS1
75	3312471X		Clean the detector PCMS2
76	3312472X		Clean the detector PCMS3
77	3312473X		Clean the detector PCMS4

2. Error Code

Table Scanner Error Code (6/10)

No.	Error code	Cause	Recovery
78	33124812	Mirror control error	Clean the surface lower mirror and cover glass.
	33124820		
	33124822		
	33124824		
	33124830		
	33124832		
	33124834		
	33124840		
	33124841		
	33124842		
	33124850		
	33124851		
	33124852		
	33124860		
33124862			
79	33124813		Clean the back lower mirror and cover glass.
	33124821		
	33124823		
	33124825		
	33124831		
	33124833		
	33124835		
	33124843		
	33124844		
	33124845		
	33124853		
	33124854		
	33124855		
33124861			
33124863			
80	33124920	Imprinting does not work.	Check parameter for imprint is correct.
81	331249F0		Lack of ink. Replace with new one.
	331249F1		
82	331249F8		Ink cartridge is not installed.
	331249F9		
83	331249XX	If it happens again, contact service personnel.	

Table Scanner Error Code (7/10)

No.	Error code	Cause	Recovery
84	33125800	Sheet is fed not straightly at imprinting	Remove sheets from stacker and resume process. Check sheet. Or confirm sheet checking.
85	331261XX	Paper jam at hopper area	
86	331262XX	Paper jam at feeding mechanism	
87	331263XX	Paper jam at gate area	
88	331264XX	Paper jam at stacker area	
89	331266XX	Paper jam at imprinting area	
90	3312700X 3312701X 3312704X 3312705X 3312708X 331270AX	Mirror control error	Clean the surface lower mirror and cover glass.
	91		3312702X 3312703X 3312706X 3312707X 3312709X 331270BX
92			3312710X
93	331272XX		
94	33128001 33128002	Sheet length error during feeding.	Remove sheets from stacker and resume process. Check sheet. Or confirm sheet checking.
	95	331281XX	
96	33128201 33128202	Sheet length error during feeding..	
	97	33128303 33128304	

2. Error Code

Table Scanner Error Code (8/10)

No.	Error code	Cause	Recovery
98	331284XX	Sheet thickness error during feeding.	Remove sheets from stacker and resume process.
99	33128500	Sheet length error during feeding.	
100	331286XX	Sheet thickness error during feeding.	
101	331287XX	Sheets remain in the scanner.	
102	33128801	Sheet feeding error.	Clean detector PC43
103	33128802		Clean detector PC42
104	33128803		Clean detector PC41
105	33128804		Clean detector PC22
106	33128810		Clean detector PC21
107	33128811		Clean detector PC43
108	33128812		Clean detector PC42
109	33128813		Clean detector PC41
110	33128814		Clean detector PC22
111	33128815		Clean detector PC31
112	33128820		Clean detector PC21
113	33128821		Clean detector PC31
114	33128822		Clean detector PCMS1through PCMS4
115	33128823		
116	331288XX	Remove jammed sheets and resume process.	
117	331289XX	Sheet thickness error during feeding.	Remove jammed sheets and resume process.
118	33128AXX	Detect multiple feeding.	
119	3312913X	Stacker n stopped immediately fully. (n is a stacker number)	Please exhaust the sheet that remains in the scanner after taking out the sheet of the stacker, and restart the business.
120	33129400	Detect hopper interlock.	Check if something between upper cover and hopper.

Table Scanner Error Code (9/10)

No.	Error code	Cause	Recovery
121	33129680	The scanner is not studied.	Contact service personnel.
122	331297XX	Scanner cover is open.	Close the door and resume scanning.
123	331X9AXX 331X9BXX	Scanner latch is open.	Latch and resume scanning.
124	3612910X	Stacker is full.	Remove sheets from stacker.
125	3612913X	Stacker n is full. (n is Stacker Number)	Remove sheets from stacker.
126	3612918X	The sheet remains in stacker n. (n is Stacker Number)	Remove sheets from stacker. Please confirm whether for the substacker to shift and to interrupt the detector When there is no Sheet.
127	3612930X	The stacker door of stacker n remains opening. (n is Stacker Number)	Close stacker door.
128	36129500 36129510	Miss-feed. Sheet remains hopper.	Set sheets in the hopper properly and resume scanning.
129	60222500 60222523 60222526 60222527 60222529 60E9XXXX 60EAXXXX 60EBXXXX 60ECXXXX	A scanner abnormal line was generated.	Close the program and power cycle to resume process.
130	8006XXXX 8007XXXX	Invalid parameter or wrong scanner configuration.	Review parameter.

2. Error Code

Table Scanner Error Code (10/10)

No.	Error code	Cause	Recovery
131	901219XX 901234XX 901255XX 901257XX 901276XX	Scanner has an error.	Contact service personnel
132	9061XXXX 9062XXXX 9063XXXX 9064XXXX 9065XXXX 9066XXXX 90FFXXXX	Scanner has an error.	Contact service personnel
133	90E92XXX 90EA2XXX 90EB2XXX 90EC2XXX	USB driver error.	Suspend process, power cycle scanner and PC to resume process.
134	90E0XXXX 90E9XXXX 90EAXXXX 90EBXXXX 90ECXXXX 95E0XXXX 99E0XXXX 99E9XXXX 99EAXXXX 99EBXXXX 99ECXXXX 9AE0XXXX 9AE9XXXX 9AEAXXXX 9AEBXXXX 9AECXXXX 9BE0XXXX 9CE0XXXX	Control program error.	Contact service personnel

2.2 Error Code (Host)

Table 2.2 Error Code (Host) (1/29)

Code	Detail	Cause	Recovery
23G00101	-	A printable check error has occurred.	Check Numbering setting.
23G00200	-	An anti-double-scan printing check 1 error has occurred. (Undetectable)	
23G00201	-	An anti-double-scan printing check 1 error has occurred. (Printing)	
23G00202	-	An anti-double-scan printing check 1 error has occurred. (No printing)	
23G00203	-	An anti-double-scan printing check 1 error has occurred. (Printing,Uncertain)	
23G00204	-	An anti-double-scan printing check 1 error has occurred. (No printing,Uncertain)	
23G00210	-	An anti-double-scan printing check 2 error has occurred. (Undetectable)	
23G00211	-	An anti-double-scan printing check 2 error has occurred. (Printing)	
23G00212	-	An anti-double-scan printing check 2 error has occurred. (No printing)	
23G00213	-	An anti-double-scan printing check 2 error has occurred. (Printing,Uncertain)	
23G00214	-	An anti-double-scan printing check 2 error has occurred. (No printing,Uncertain)	

2. Error Code

Table 2.2 Error Code (Host) (2/29)

Code	Detail	Cause	Recovery	
33G00101	-	Length check error has occurred. (Long)	Check sheet. Or confirm sheet checking.	
33G00102	-	Length check error has occurred. (Short)		
33G00111	-	Mixed length check error has occurred. (Long)		
33G00112	-	Mixed length check error has occurred. (Short)		
33G00201	-	Width check error has occurred. (Long)		
33G00202	-	Width check error has occurred. (Short)		
33G00211	-	Mixed width check error has occurred. (Long)		
33G00212	-	Mixed width check error has occurred. (Short)		
33G00401	-	Skew error has occurred. (Large left skew angle)		
33G00402	-	Skew error has occurred. (Large right skew angle)		
33G00901	-	A four-point-coordinates detection error has occurred. (Four-point rectangular detection)		Check sheet. Refer to Appendix of this manual: A-4 Notes on 4-point coordinates recognition errors.
33G00902	-	Four-point rectangular detection(color))		
33G00B01	-	A four-point-coordinates recognition warning error has occurred. (Soiled at the reference side)		
33G00B02	-	A four-point-coordinates recognition warning error has occurred. (Uncertain at the top or bottom)		
33G00B03	-	A four-point-coordinates recognition warning error has occurred. (Uncertain at the left end)		
33G00B04	-	A four-point-coordinates recognition warning error has occurred. (Uncertain at the right end)		

Table 2.2 Error Code (Host) (3/29)

Code	Detail	Cause	Recovery
33G00B05	-	A four-point-coordinates recognition warning error has occurred. (Width error at the top)	Check sheet. Refer to Appendix of this manual: A-4 Notes on 4-point coordinates recognition errors.
33G00B11	-	A four-point-coordinates recognition warning error has occurred. (Error of straight advancement at top or bottom)	
33G00B12	-	A four-point-coordinates recognition warning error has occurred. (Top or bottom shape abnormality error)	
33G00B13	-	A four-point-coordinates recognition warning error has occurred. (Left end straight advancement error)	
33G00B14	-	A four-point-coordinates recognition warning error has occurred. (Right end straight advancement error)	
33G00B15	-	A four-point-coordinates recognition warning error has occurred. (Less than minimum width)	
33G00B16	-	A four-point-coordinates recognition warning error has occurred. (Less than minimum length)	Check sheet. Refer to Appendix of this manual: A-4 Notes on 4-point coordinates recognition errors.
33G00B17	-	A four-point-coordinates recognition warning error has occurred. (Skew error)	
33G00B18	-	A four-point-coordinates recognition warning error has occurred. (Image lack error)	
33G00B19	-	A four-point-coordinates recognition warning error has occurred. (Error with great top and bottom width difference)	
33G00B1A	-	A four-point-coordinates recognition warning error has occurred. (Error with great left and right length difference)	
33G00BFF	-	A four-point-coordinates recognition warning error has occurred. (Other)	

2. Error Code

Table 2.2 Error Code (Host) (4/29)

Code	Detail	Cause	Recovery
33G00C02		A four-point-coordinates recognition warning error has occurred. (Uncertain at the top or bottom(color))	Check sheet. Refer to Appendix of this manual: A-4 Notes on 4-point coordinates recognition errors.
33G00C03		A four-point-coordinates recognition warning error has occurred. (Uncertain at the left end)	
33G00C04		A four-point-coordinates recognition warning error has occurred. (Uncertain at the right end(color))	
33G00C05		A four-point-coordinates recognition warning error has occurred. (Width error at the top(color))	
33G00C18		A four-point-coordinates recognition warning error has occurred. (Image lack error(color))	
33G00CFD		A four-point-coordinates recognition warning error has occurred. (loaded modules fails(color))	
33G00CFE		A four-point-coordinates recognition warning error has occurred. (Read the function's address fails(color))	
33G00CFF		A four-point-coordinates recognition warning error has occurred. (Other(color))	

Table 2.2 Error Code (Host) (5/29)

Code	Detail	Cause	Recovery
80G0A101	-	Sheet information table check error has occurred.	-
	00040001	Pre-Feeding specification error	Review feeding setting.
	00040002	Hopper empty control specification error	
	00040003	Hopper position specification error	
	00040004	Scanning speed specification error	
	00040005	Automatic scanning mode specification error	
	00040006	Inter-sheet gap specification error	
	00040007	Picking roller specification error	
	00040008	Separating force specification error	
	00040009	Skew angle correction control specification error	
	0004000A	Non-sequence scanning control specification error	
	0004000B	Double-error conversion specification error	
	00040101	Ejection check specification error	
	00040102	Normal sheet ejection stacker specification error	
	00040103	Abnormal sheet ejection stacker specification error	
	00040104	Normal sheet ejection group specification error	
	00040105	Abnormal sheet ejection group specification error	
	00040106	Intra-group sheet ejection sequence specification error	
	00040107	Group identifier specification error	
	00040108	Stacker name specification error	
0004010A	Stacker count specification error		
0004010B	Stacker full control specification error		

2. Error Code

Table 2.2 Error Code (Host) (6/29)

Code	Detail	Cause	Recovery
+80G0A101	-	Sheet information table check error has occurred.	
	00040201	Printing place specification error	Check numbering setting again
	00040202	Printing orientation specification error	
	00040203	Printing position specification's specification error	
	00040204	Printing position specification error	
	00040205	Printing character count specification error	
	00040207	Anti-double-scan printing specification error	
	00040211	Printable check specification error	
	00040212	Printable check specification's specification error	
	00040221	Anti-double-scan printing check 1 specification error	
	00040222	Check method 1 specification error	
	00040223	Detection method 1 specification error	
	00040224	Check place 1 specification error	
	00040225	Vertical start position 1 specification error	
	00040226	Vertical end position 1 specification error	
	00040227	Horizontal start position 1 specification error	
	00040228	Horizontal end position 1 specification error	
	00040229	Anti-double-scan printing check image 1 specification error	
	00040231	Anti-double-scan printing check 2 specification error	
	00040232	Check method 2 specification error	
00040233	Detection method 2 specification error		
00040234	Check place 2 specification error		
00040235	Vertical start position 2 specification error		
00040236	Vertical end position 2 specification error		
00040237	Horizontal start position 2 specification error		
00040238	Horizontal end position 2 specification error		
00040239	Anti-double-scan printing check image 2 specification error		

Table 2.2 Error Code (Host) (7/29)

Code	Detail	Cause	Recovery
80G0A101	-	Sheet information table check error has occurred.	-
	00040241	Printing character control specification error	Check numbering setting again
	00040242	Printing character number specification error	
	00040243	Printing character size specification error	
	00040244	Printing character thickness specification error	
	00040301	Sheet length specification error	Check feed setting again.
	00040302	Sheet width specification error	
	00040303	Sheet thickness specification error	
	00040304	Sheet check image specification's specification error	
	00040305	Sheet length check specification error	
	00040306	Mixed sheet length specification error	
	00040307	Minimum sheet length check omission specification error	
	00040308	Sheet length specification error (Maximum value)	
	00040309	Sheet length specification error (Minimum value)	
	0004030A	Sheet width check specification error	
	0004030B	Mixed sheet width specification error	
	0004030C	Minimum sheet width check omission specification error	
	0004030D	Sheet width specification error (Maximum value)	
	0004030E	Sheet width specification error (Minimum value)	
	0004030F	Sheet thickness check specification error	

2. Error Code

Table 2.2 Error Code (Host) (8/29)

Code	Detail	Cause	Recovery
80G0A101	-	Sheet information table check error has occurred.	-
	00040310	Sheet thickness check method specification error	Check Sheet setting again.
	00040311	Mixed sheet thickness specification error	
	00040312	Minimum sheet thickness check omission specification error	
	00040313	Sheet thickness specification error (Standard value)	
	00040314	Sheet thickness specification error (Step Height value)	
	00040315	Sheet thickness specification error (Ultrasonic multi-feed detection length)	
	00040316	Sheet skew check specification error	
	00040317	Sheet skew angle specification error (Left limit angle)	
	00040318	Sheet skew angle specification error (Right limit angle)	
	00040319	Sheet length check-cancellation specification error	
	0004031A	Sheet width check-cancellation specification error	
	0004031B	Sheet thickness check-cancellation specification error	
	0004031C	Four-point rectangular error bypass specification error	
	0004031E	Four-point detection error bypass specification error	
0004031F	Recognition check flag specification error		

Table 2.2 Error Code (Host) (9/29)

Code	Detail	Cause	Recovery
80G0A101	-	Sheet information table check error has occurred.	-
	00040320	Sheet length device check specification error	Check sheet setting again
	00040321	Mixed sheet length specification error	
	00040322	Minimum sheet length check omission specification error	
	00040323	Maximum mixed sheet length specification error	
	00040324	Sheet length check moderation specification error	
	00040325	Sheet length device check cancellation specification error	
	00040326	Window width specification error	
	00040327	Sheet thickness specification error (Mixed thin sheet)	
	00040328	Window length specification error (Maximum value)	
	00040329	Window width specification error (Maximum value)	
	00040330	Four-point detection used Color Flg specification error	

2. Error Code

Table 2.2 Error Code (Host) (10/29)

Code	Detail	Cause	Recovery
80G0A101	-	Sheet information table check error has occurred.	-
	00040401	Scanning image side count specification error (Front side)	Check image setting again
	00040402	Scanning image side count specification error (Back side)	
	00040403	Scanning image kind specification error	
	00040404	Halftone type specification error	
	00040405	Input resolution specification error (X-axis)	
	00040406	Input resolution specification error (Y-axis)	
	00040407	Light-source color specification error	
	00040408	Special color table number specification error	
	00040409	Black frame specification error	
	0004040A	Highlighter/correction fluid specification error	
	0004040B	Density specification's specification error	
	0004040C	Density specification error	
	0004040D	Black&White image detailed specification's specification error	
	0004040E	Expanded density specification error	
	0004040F	Mask slice specification error	
00040410	Smoothing specification error		
00040411	Multi-value image quality detail specification's specification error		
00040412	Information setting method specification error		

Table 2.2 Error Code (Host) (11/29)

Code	Detail	Cause	Recovery
80G0A101	-	Sheet information table check error has occurred.	-
	00040413	Highlight specification error (RGB)	Check image setting again
	00040414	Shadow specification error (RGB)	
	00040415	Gamma specification error (RGB)	
	00040416	Coloring specification error (RGB)	
	00040417	Highlight specification error (Red)	
	00040418	Shadow specification error (Red)	
	00040419	Gamma specification error (Red)	
	0004041A	Highlight specification error (Green)	
	0004041B	Shadow specification error (Green)	
	0004041C	Gamma specification error (Green)	
	0004041D	Highlight specification error (Blue)	
	0004041E	Shadow specification error (Blue)	
	0004041F	Gamma specification error (Blue)	
	00040420	Scanning image transfer mode specification error	
	00040421	Scanning image length specification error	
	00040422	Scanning image width specification error	
	00040423	Rectangle position coordinate specification error (X-axis)	
	00040424	Rectangle position coordinate specification error (Y-axis)	
	00040425	Scanning-only image specification error	
	00040426	Highlight specification error(Black&White)	
	00040427	Shadow specification error (Black&White)	
	00040428	Gamma specification error (Black&White)	
	00040429	Highlight specification error (RGB Recommended value)	
	0004042A	Shadow specification error (RGB Recommended value)	
	0004042B	Gamma specification error (RGB Recommended value)	
	0004042C	Coloring specification error(RGB Recommended value)	

2. Error Code

Table 2.2 Error Code (Host) (12/29)

Code	Detail	Cause	Recovery
80G0A101	-	Sheet information table check error has occurred.	-
	00040501	Image editing method specification error	Check image setting again
	00040502	Skew correction specification error	
	00040503	Image cropping specification error	
	00040504	Image rotation specification error	
	00040505	Image movement specification error	
	00040506	Out-of-image-area color specification error	
	00040507	Frame drawing specification's specification error	
	00040508	Frame drawing width specification error	
	00040509	Out-of-image-area color specification error	
	00040510	Reference image specification's specification error	
	00040511	Skew correction-omitted angle specification error	
	00040512	Gradation reverse flag specification error	
00040513	Skew correction interpolation mode specification error		

Table 2.2 Error Code (Host) (13/29)

Code	Detail	Cause	Recovery
80G0A101	-	Sheet information table check error has occurred.	-
	00040601	Numbering print content specification error (Front side)	Check numbering setting again
	00040602	Numbering print content specification error (Back side)	
	00040611	Numbering print content specification error (NULL after ' to ' specification)	
	00040612	Numbering print content specification error (NULL after '[' specification)	
	00040613	Numbering print content specification error ('[' after '[' specification)	
	00040614	Numbering print content specification error (No ']' after '[' specification)	
	00040615	Numbering print content specification error (']' before '[' specification)	
	00040621	Numbering print content specification error (yy: Double specification)	
	00040622	Numbering print content specification error (mm: Double specification)	
	00040623	Numbering print content specification error (dd: Double specification)	
	00040624	Numbering print content specification error (yy: digit shortage)	
	00040625	Numbering print content specification error (mm: digit shortage)	
	00040626	Numbering print content specification error (dd: digit shortage)	
	00040627	Numbering print content specification error (yy: Excess digits)	
	00040628	Numbering print content specification error (mm: Excess digits)	
	00040629	Numbering print content specification error (dd: Excess digits)	

2. Error Code

Table 2.2 Error Code (Host) (14/29)

Code	Detail	Cause	Recovery
80G0A101	-	Sheet information table check error has occurred.	-
	00040631	Numbering print content specification error (#: Double specification)	Check numbering setting again
	00040632	Numbering print content specification error (#: Excess digits)	
	00040641	Numbering print content specification error (*: Double specification)	
	00040642	Numbering print content specification error (*: Excess digits)	
	00040651	Numbering print content specification error (¥: Double specification)	
	00040652	Numbering print content specification error (¥: Excess digits)	
	00040661	Numbering print content specification error (\$: Double specification)	
	00040662	Numbering print content specification error (\$: Excess digits)	
	00040671	Numbering print content specification error (&: Double specification)	
	00040672	Numbering print content specification error (&: Excess digits)	
	00040681	Numbering print content specification error (%: Double specification)	
	00040682	Numbering print content specification error (%: Excess digits)	
	00040691	Numbering print content specification error (^: Double specification)	
	00040692	Numbering print content specification error (^: Excess digits)	
	000406F1	Numbering print content specification error (None)	
	000406F2	Numbering print content specification error (Buffer overflow)	

Table 2.2 Error Code (Host) (15/29)

Code	Detail	Cause	Recovery
80G0A101	-	Sheet information table check error has occurred.	-
	00040701	Decimal point specification's specification error	Check image setting again
	00040801	Barcode recognition specification error	Check recognition setting again
	00040802	Barcode recognition count specification error	
	00040803	Barcode recognition image specification's specification error	
	00040804	Barcode type specification error	
	00040805	Barcode recognition orientation specification error	
	00040810	A non-PP installation error has occurred.(Code recognition of two dimensions)	
	00040850	Patchcode recognition specification error	
	00040851	Patchcode recognition image specification's specification error	
	00040852	Patchcode recognition orientation specification error	
	00040853	Order and priority for Patchcode searching specification error	
	00040901	Another image using flag specification error	Check image setting again
	00040902	Another image using image specification error	

2. Error Code

Table 2.2 Error Code (Host) (16/29)

Code	Detail	Cause	Recovery
80G0A201	-	Sheet information combination check error has occurred.	-
	00041001	Resolution combination check error	Check image setting again
	00041002	Light-source color combination check error	
	00041003	Anti-double-scan printing combination error	
	00041004	Paper thickness check combination error	
	00041005	Scanning image side count combination error	
	00041006	Printing place combination check error	
	00041008	Light-source color combination check error(Custom Specification)	
	00041101	Ejection group combination error	Check feed setting again
	00041201	Group identifier combination error	
	00041203	Stacker name combination error	

Table 2.2 Error Code (Host) (17/29)

Code	Detail	Cause	Recovery
80G0A201	-	Sheet information combination check error has occurred.	-
	00041301	Printing position combination check error	Check numbering setting again
	00041302	Printing character count combination check error	
	00041303	Printing position specification combination check error	
	00041304	Printing character control combination check error	
	00041305	Numbering feed speed anti-double-scan printing combination error	
	00041306	Numbering feed speed printing location combination error	
	00041307	Numbering feed speed paper thickness check combination error	
	00041308	Numbering feed speed mixed paper thickness combination error	
	00041311	Printable check image specification combination error	
	00041312	Printable check combination error	
	00041321	Anti-double-scan printing check 1 area specification error	
	00041322	Anti-double-scan printing check 1 image specification combination error	
	00041331	Anti-double-scan printing check 2 area specification error	
00041332	Anti-double-scan printing check 2 image specification combination error		

2. Error Code

Table 2.2 Error Code (Host) (18/29)

Code	Detail	Cause	Recovery
80G0A201	-	Sheet information combination check error has occurred.	-
	00041401	Paper check image specification combination error	Check sheet check setting again
	00041402	Minimum length bypass-possible combination error	
	00041403	Mixed paper thickness combination error	
	00041404	Double check synchronization combination error	
	00041405	Mixed paper size combination error (Paper length)	
	00041406	Mixed paper size combination error (Paper width)	
	00041407	Double-check combination error (Paper length)	
	00041408	Double-check combination error (Paper width)	
	00041409	Double-check combination error (Paper thickness)	
	0004140 A	Numbering-run double-check execution confirmation check error	
	0004140 B	Double-detection length validity check error	
	0004140 C	Method-based paper thickness check error	
	0004140 D	Minimum thickness bypass-possible combination error	
	0004140 E	Double-check (Paper length) combination error (Device check)	

Table 2.2 Error Code (Host) (19/29)

Code	Detail	Cause	Recovery
80G0A201	-	Sheet information combination check error has occurred.	-
	00041501	Image side count error	Check image setting again
	00041502	Scanning image kind side count combination error	
	00041503	Halftone image combination error	
	00041504	Color image combination error	
	00041505	Resolution matching error	
	00041506	Resolution scanning image kind matching error	
	00041507	Optional resolution information matching error	
	00041508	Resolution HT-4155 matching error	
	00041509	Resolution HT-4155 scanning speed matching error	
	0004150 A	Special color table number combination error	
	0004150 B	Density specification combination error	
	0004150 C	Black&White image detailed specification combination error	
	0004150 D	Multi-value image detailed specification combination error	
0004150 E	Image-only image use error		

2. Error Code

Table 2.2 Error Code (Host) (20/29)

Code	Detail	Cause	Recovery
80G0A201	-	Sheet information combination check error has occurred.	-
	0004150F	Anti-double-scan printing check matching error	Check numbering setting again
	00041511	Resolution and printing place combination error	
	00041512	Resolution and numbering feed speed combination error	
	00041513	Resolution and numbering feed speed level 1 combination error	
	00041514	Resolution and numbering feed speed level 2 combination error	
	00041515	Resolution and numbering feed speed level 3 combination error	
	00041516	Resolution and numbering feed speed level 4 combination error	
	00041517	Light-source color and Scanning image kind matching error	
	00041518	Black&White image detailed specification2 combination error	
	00041601	Image paper cropping combination error	
	00041602	Image recognition cropping combination error	
	00041603	Skew correction combination error	
	00041604	Standard image specification combination error	
	00041701	Printing character count combination check error	Check numbering setting again
	00041702	Printing character combination check error(4Space)	
	00041703	1 Place and 2 Place Printing character count combination check error	

Table 2.2 Error Code (Host) (21/29)

Code	Detail	Cause	Recovery
80G0A201	-	Sheet information combination check error has occurred.	-
	00041801	Barcode recognition image specification combination error	Check image setting again
	00041802	Barcode recognition image type combination error	
	00041803	Barcode recognition count combination error	
	00041901	Window width paper size combination error (Width)	Check sheet setting again.
	00041A01	Non-sequence scanning ejection information specification error	Check feed setting again.
	00041B01	Check image combination error (Standard image)	Check image setting again
	00041B02	Check image combination error (Form check image)	
	00041B03	Check image combination error (Barcode recognition image)	
	00041B04	Check image combination error (Printable check image)	
	00041B05	Check image combination error (Anti-double-scan printing check 1 image)	
	00041B06	Check image combination error (Anti-double-scan printing check 2 image)	
	00041B11	Another image using image combination error	
	00041B12	Read only image combination error	
	00041B13	Read only image reference ahead combination error	
	00041B14	Thin paper specification combination error	
	00041B15	Recognition check flag combination error	
	00041B16	Recognition check flag and Four-point detection used Color Flg combination error	
	00041C01	Four-point detection used Color Flg matching error	
	00041F01	Patchcode recognition image specification combination error	
	00041F02	Patchcode recognition image type combination error	
00041F03	Check image combination error(Patchcode recognition image)		

2. Error Code

Table 2.2 Error Code (Host) (22/29)

Code	Detail	Cause	Recovery
90G00001	-	A version error has occurred. (Device control)	Contact service personnel.
90G00002	-	A version error has occurred. (Color image editing)	
90G00003	-	A version error has occurred. (Feature information error)	
90G00101	-	A sequence error has occurred.	
90G00102	-	A sequence error has occurred. (Feature information search)	

Table 2.2 Error Code (Host) (23/29)

Code	Detail	Cause	Recovery
90G00201	-	An argument check error has occurred.	-
	01050001	Specification image type error	Check image setting again
	01050002	Four-point-coordinates acquisition flag error	
	01050004	Scanning mode flag check error	
	01070001	Specification image type error	Check sheet check setting again
	01070002	Sheet double-check execution flag error	
	01070003	Sheet check execution flag error (Length)	
	01070004	Mixed sheet length error	
	01070005	Sheet check execution flag error (Minimum length)	
	01070006	Sheet check execution flag error (Width)	
	01070007	Mixed sheet width error	
	01070008	Sheet check execution flag error (Minimum width)	
	01070009	Sheet check execution flag error (Skew)	
	0107000 A	Paper skew angle error (Left limit angle)	
	0107000 B	Paper skew angle error (Right limit angle)	
	0107000 C	Scanning mode flag check error	
	01100001	Device connection check flag error	Check connection of device.

2. Error Code

Table 2.2 Error Code (Host) (24/29)

Code	Detail	Cause	Recovery
90G00201	-	An argument check error has occurred.	-
	01120001	Specification image kind error	Check image setting again
	01120002	Skew correction flag error	
	01120003	Image cropping flag error	
	01120004	Rotation flag error	
	01120005	Image movement flag error	
	01120006	Out-of-image-area painting flag error	
	01120007	Black Drawing flag error (Top side)	
	01120008	Black Drawing flag error (Bottom side)	
	01120009	Black Drawing flag error (Left side)	
	0112000A	Black Drawing execution flag error (Right side)	
	0112000B	Image movement specification error	
	0112000C	Out-of-image-area color specification error	
	0112000D	Skew correction interpolation mode specification error	
	0112000E	Bitmap file header acquisition flag error	
	0112000F	Scanning mode flag check error	
	01140001	Error bypass information source error	Check numbering setting again
	01140002	Printable check error	
	01150001	Specification image type error	Check image setting again
	01150002	Printable check error	Check numbering setting again
	01180001	Feature information flag error	Contact service personnel.
	01180002	Feature information name error	
	011B0001	Feature information name error	
	011C0001	Feature information name error	
	011C0002	Feature information count error	

Table 2.2 Error Code (Host) (25/29)

Code	Detail	Cause	Recovery
90G00301	-	A file open error has occurred. (Read access)	Contact service personnel.
90G00302	-	A file read error has occurred.	
	01180011	Read error (Header reading)	
	01180012	Read error (Header inconsistency)	
	01180013	Read error (Table reading)	
	01180014	Read error (Next table seeking)	
	01180015	Read error (Feature reading)	
	01190011	Read error (Header reading)	
	01190012	Read error (Header inconsistency)	
	01190013	Read error (Table reading)	
	01190014	Read error (Next table seeking)	
	011B001 1	Read error (Header reading)	
	011B001 2	Read error (Header inconsistency)	
	011B001 3	Read error (Next table seeking)	
	011B001 4	Read error (Feature reading)	
	011C001 1	Read error (Header reading)	
	011C001 2	Read error (Header inconsistency)	
	011C001 3	Read error (Next table seeking)	
	011C001 4	Read error (Feature reading)	

2. Error Code

Table 2.2 Error Code (Host) (26/29)

Code	Detail	Cause	Recovery
90G00303	-	A file write error has occurred.	-
	011B002 1	Write error (Feature information file)	Contact service personnel.
	011C002 1	Write error (Feature information file)	
90G00304		A file access error has occurred.	-
	011B003 1	File size acquisition error	Contact service personnel.
	011C003 1	File size acquisition error	
90G00305	-	A file open error has occurred. (Write access)	
90G00306	-	A file open error has occurred. (Read-write access)	
90G00401	-	An unconnected supported-device error has occurred.	
90G00402	-	An out-of-support target error has occurred. (Feature)	
90G00501	-	A size information invalid error has occurred.	
90G00601	-	An unavailable data error has occurred. (Feature)	
90G00A01	-	A four-point coordinate acquisition error has occurred.	Check sheet. Refer to Appendix of this manual: A-4 Notes on 4-point coordinates recognition errors.
90G00A02		A four-point-coordinates acquisition error has occurred.(color)	
90G00B01	-	A numbering check error has occurred.	Check numbering setting again
90G00C01	-	A barcode recognition error has occurred. (Memory error)	Check Recognition setting again
90G00C02	-	A barcode recognition error has occurred. (Argument error)	
90G00C03		A barcode recognition error has occurred. (loaded modules fails)	
90G00D01		A patchcode recognition error has occurred. (Memory error)	
90G00D02		A patchcode recognition error has occurred. (Argument error)	
90G00D03		A patchcode recognition error has occurred. (recognition error)	
90G00D04		A patchcode recognition error has occurred. (Other errors)	
90G0A101	-	A sequence error has occurred.	Check process sequence of application.

Table 2.2 Error Code (Host) (27/29)

Code	Detail	Cause	Recovery
90G0A201	-	An argument check error has occurred.	-
	00010001	Device connection check flag error	Check setting up
	00020001	Specified-device number error	
	00020002	Feature information flag error	Contact service personnel.
	00020003	Feature information name error	
	00030001	Paper information table pointer error	
	00030002	Soft option check existence flag error	
	00060001	Ejection control flag error	
	00060002	Four-point-coordinates information acquisition flag error	
	00060003	Four-point-coordinates information table pointer error	
	00060004	Bitmap file header acquisition flag error	
	00061001	Executable function flag error	
	00061002	Ejection control flag error	
	00061003	Four-point-coordinates information acquisition flag error	
	00061004	Four-point-coordinates information table pointer error	
	00061005	Barcode Result information table pointer error	

2. Error Code

Table 2.2 Error Code (Host) (28/29)

Code	Detail	Cause	Recovery
90G0A201	-	An argument check error has occurred.	-
	00061006	Bitmap file header acquisition flag error	Contact service personnel.
	00061101	Ejection printing place specification error (Front side)	
	00061201	Ejection printing place specification error (Back side)	
	00062001	Scan image acquisition image specification error (Out-of-range specification)	
	00062002	Scan image acquisition image specification error (Multi-value image definition)	
	00062003	Scan image acquisition image specification error (No image definition)	
	00062004	Scan image acquisition image specification error (No image acquisition)	
	00070001	Ejection instruction flag error	
	000C0001	Using device number error (Feature information search)	
	000E0001	Using device number error (Feature information acquisition)	
	000E0002	Feature information name number error (Feature information acquisition)	
	000F0001	Using device number error (Feature information deleting)	
	000F0002	Feature information name number error (Feature information deletion)	

Table 2.2 Error Code (Host) (29/29)

Code	Detail	Cause	Recovery
90G0A401	-	An unconnected device error has occurred.	Check setting up
90G0A501	-	A non-PP installation error has occurred.	
99G00101	-	A memory allocation error occurred.	Check the usage status of PC memory)
99G00102	-	A memory shortage error has occurred.	
99G00201	-	A DLL load error has occurred.	Contact service personnel.
99G00301	-	A function address acquisition error has occurred.	
99G0A101	-	A memory allocation error occurred.	Check the usage status of PC memory)
99G0A102	-	An unavailable memory data error has occurred.	Contact service personnel.
99G0A103	-	A thread generation error has occurred.	
9AG00101	-	An INI file acquisition error has occurred.	
9BG00101	-	A registry acquisition error has occurred.	Contact service personnel.
9CG00101	-	A color image editing start error has occurred.	
9CG00201	-	A color image editing export error has occurred.	
9CG00301	-	A color image editing processing error has occurred.	
9CG00401	-	A color image editing end error has occurred.	

2.3 List of Condition Codes

Of the condition codes acquired by DG_CONTROL/DAT_STATUS/MSG_GET, those custom return codes of TWCC_CUSTOMBASE (0X8000) or more are listed in Table 5.2.

Table 2.3 List of Condition Codes(1/30)

Return code	Corresponding error code	Error factor
0x8000	-	Other error
0x8101	00023G00101	A printable check error has occurred.
0x8103	00023G00200	An anti-double-scan printing check 1 error has occurred. (Undetectable)
0x8104	00023G00201	An anti-double-scan printing check 1 error has occurred. (Printing)
0x8105	00023G00202	An anti-double-scan printing check 1 error has occurred. (No printing)
0x8106	00023G00203	An anti-double-scan printing check 1 error has occurred. (Unclear printing)
0x8107	00023G00210	An anti-double-scan printing check 2 error has occurred. (Undetectable)
0x8108	00023G00211	An anti-double-scan printing check 2 error has occurred. (Printing)
0x8109	00023G00212	An anti-double-scan printing check 2 error has occurred. (No printing)
0x810B	00023G00203	An anti-double-scan printing check 1 error has occurred. (Printing,Uncertain)
0x810C	00023G00204	An anti-double-scan printing check 1 error has occurred. (No printing,Uncertain)
0x810D	00023G00213	An anti-double-scan printing check 2 error has occurred. (Printing,Uncertain)
0x810E	00023G00214	An anti-double-scan printing check 2 error has occurred. (No printing,Uncertain)

Table 2.3 List of Condition Codes(2/30)

Return code	Corresponding error code	Error factor
0x8201	00033G00101	Length check error has occurred. (Long)
0x8202	00033G00102	Length check error has occurred. (Short)
0x8203	00033G00111	Mixed length check error has occurred. (Long)
0x8204	00033G00112	Mixed length check error has occurred. (Short)
0x8205	00033G00201	Width check error has occurred. (Long)
0x8206	00033G00202	Width check error has occurred. (Short)
0x8207	00033G00211	Mixed width check error has occurred. (Long)
0x8208	00033G00212	Mixed width check error has occurred. (Short)
0x8209	00033G00401	Skew error has occurred. (Large left skew angle)
0x820A	00033G00402	Skew error has occurred. (Large right skew angle)
0x820F	00033G00901	A four-point-coordinates detection error has occurred. (Four-point rectangular detection)
0x8210	00033G00B01	A four-point-coordinates recognition warning error has occurred. (Soiled at the reference side)
0x8211	00033G00B02	A four-point-coordinates recognition warning error has occurred. (Uncertain at the top or bottom)
0x8212	00033G00B03	A four-point-coordinates recognition warning error has occurred. (Uncertain at the left end)
0x8213	00033G00B04	A four-point-coordinates recognition warning error has occurred. (Uncertain at the right end)

2. Error Code

Table 2.3 List of Condition Codes(3/30)

Return code	Corresponding error code	Error factor
0x8224	00033G00B05	A four-point-coordinates recognition warning error has occurred. (Width error at the top)
0x8225	00033G00BFF	A four-point-coordinates recognition warning error has occurred. (Other)
0x8226	000331291**	The stacker is full.
0x8227	00033G00B11	A four-point-coordinates recognition warning error has occurred. (Error of straight advancement at top or bottom)
0x8228	00033G00B12	A four-point-coordinates recognition warning error has occurred. (Top or bottom shape abnormality error)
0x8229	00033G00B13	A four-point-coordinates recognition warning error has occurred. (Left end straight advancement error)
0x822A	00033G00B14	A four-point-coordinates recognition warning error has occurred. (Right end straight advancement error)
0x822B	00033G00B15	A four-point-coordinates recognition warning error has occurred. (Less than minimum width)
0x822C	00033G00B16	A four-point-coordinates recognition warning error has occurred. (Less than minimum length)
0x822D	00033G00B17	A four-point-coordinates recognition warning error has occurred. (Skew error)
0x822E	00033G00B18	A four-point-coordinates recognition warning error has occurred. (Image lack error)
0x822F	00033G00B19	A four-point-coordinates recognition warning error has occurred. (Error with great top and bottom width difference)

Table 2.3 List of Condition Codes(4/30)

Return code	Corresponding error code	Error factor
0x8230	00033G00B1A	A four-point-coordinates recognition warning error has occurred. (Error with great left and right length difference)
0x8231	00033G00902	A four-point-coordinates detection error has occurred. (Four-point rectangular detection(color))
0x8232	00033G00C02	A four-point-coordinates recognition warning error has occurred. (Uncertain at the top or bottom(color))
0x8233	00033G00C03	A four-point-coordinates recognition warning error has occurred. (Uncertain at the left end)
0x8234	00033G00C04	A four-point-coordinates recognition warning error has occurred. (Uncertain at the right end(color))
0x8235	00033G00C05	A four-point-coordinates recognition warning error has occurred. (Width error at the top(color))
0x8236	00033G00C18	A four-point-coordinates recognition warning error has occurred. (Image lack error(color))
0x8237	00033G00CFD	A four-point-coordinates recognition warning error has occurred. (loaded modules fails(color))
0x8238	00033G00CFE	A four-point-coordinates recognition warning error has occurred. (Read the function's address fails(color))
0x8239	00033G00CFF	A four-point-coordinates recognition warning error has occurred. (Other(color))
0x8301	000361295**	The sheet cannot be sent.
0x8302	000361291**	The stacker is full.
0x8401	00080G0A101	Sheet information table check error has occurred.
0x8402	00080G0A201	Sheet information combination check error has occurred.

2. Error Code

Table 2.3 List of Condition Codes(5/30)

Return code	Corresponding error code	Error factor
0x8501	00090G00001	A version error has occurred. (Device control)
0x8502	00090G00002	A version error has occurred. (Color image editing)
0x8503	00090G00101	A sequence error has occurred.
0x8504	00090G00201	An argument check error has occurred.
0x8505	00090G00301	A file open error has occurred. (Reading access)
0x8506	00090G00302	A file read error has occurred.
0x8507	00090G00401	An unconnected supported-device error has occurred.
0x8508	00090G00501	A size information invalid error has occurred.
0x8509	00090G00A01	A four-point-coordinates acquisition error has occurred.
0x850A	00090G00B01	A numbering check error has occurred.
0x850B	00090G00C01	A barcode recognition error has occurred. (Memory error)
0x850C	00090G00C02	A barcode recognition error has occurred. (Argument error)
0x850D	00090G0A101	A sequence error has occurred.
0x850E	00090G0A201	An argument check error has occurred.
0x8510	00090G00303	A file write error has occurred.
0x8511	00090G00304	A file access error has occurred.
0x8512	00090G00305	A file open error has occurred. (Write access)
0x8513	00090G00306	A file open error has occurred. (Read-write access)
0x8514	00090G0A501	A non-PP installation error has occurred.
0x8515	00090G00003	A version error has occurred. (Feature information error)
0x8516	00090G00102	A sequence error has occurred. (Feature information search)
0x8517	00090G00402	An out-of-support target error has occurred. (Feature)
0x8518	00090G00601	An unavailable data error has occurred. (Feature)
0x8519	00090G0A401	An unconnected device error has occurred.
0x851A	00090G00A02	A four-point-coordinates acquisition error has occurred.(color)
0x851B	00090G00C03	A barcode recognition error has occurred. (loaded modules fails)
0x851C	00090G00D01	A patchcode recognition error has occurred. (Memory error)
0x851D	00090G00D02	A patchcode recognition error has occurred. (Argument error)
0x851E	00090G00D03	A patchcode recognition error has occurred. (recognition error)
0x851F	00090G00D04	A patchcode recognition error has occurred. (Other errors)

Table 2.3 List of Condition Codes(6/30)

Return code	Corresponding error code	Error factor
0x8601	00099G00101	A memory allocation error occurred.
0x8602	00099G00102	A memory shortage error has occurred.
0x8603	00099G00201	A DLL load error has occurred.
0x8604	00099G00301	A function address acquisition error has occurred.
0x8605	00099G0A101	A memory allocation error occurred.
0x8606	00099G0A102	An unavailable memory data error has occurred.
0x8607	00099G0A103	A thread generation error has occurred.
0x8701	0009AG00101	An INI file acquisition error has occurred.
0x8702	0009BG00101	A registry acquisition error has occurred.
0x8703	0009CG00101	A color image editing start error has occurred.
0x8704	0009CG00201	A color image editing export error has occurred.
0x8705	0009CG00301	A color image editing processing error has occurred.
0x8706	0009CG00401	A color image editing end error has occurred.

2. Error Code

Table 2.3 List of Condition Codes(7/30)

Return code	Corresponding error code	Error factor
0x8A00	000100100**	Format program demand error has occurred.
0x8A01	000100102**	Format object demand error has occurred.
0x8A02	00020A11003	As video image is in use, image memory cannot be expanded.
0x8A03	00020E61001	The device is BUSY. (The device reports BUSY status.)
0x8A04	00020E61002	The device is reserved. (Other process is using the device.)
0x8A05	00020E61003	The device is warming up. (The device is not ready.)
0x8A06	00020E62000	When beginning, Selection Timeout has occurred.
0x8A07	00020E62001	No device is connected.
0x8A08	00020E81001	The device is BUSY. (The device reports BUSY status.)
0x8A09	00020E81002	The device is reserved. (Other process is using the device.)
0x8A0A	00020E81003	The device is warming up. (The device is not ready.)
0x8A0B	00020E81004	The device is warming up. (Releasing from the energy saving mode)
0x8A0C	00020E82000	When beginning, Selection Timeout has occurred.
0x8A0D	00020E82001	No device is connected.
0x8A0E	00020E91002	The device is reserved. (Other process is using the device.)
0x8A0F	00020E91003	The device is warming up. (The device is not ready.)

Table 2.3 List of Condition Codes(8/30)

Return code	Corresponding error code	Error factor
0x8A10	00020E91013	The device is warming up. (The device is not ready.)(sorter 1)
0x8A11	00020E91023	The device is warming up. (The device is not ready.)(sorter 2)
0x8A12	00020E91033	The device is warming up. (The device is not ready.)(sorter 3)
0x8A13	00020E91043	The device is warming up. (The device is not ready.)(sorter 4)
0x8A14	00020E92001	No device is connected.
0x8A15	00020EA1002	The device is reserved. (Other process is using the device.)
0x8A16	00020EA1003	The device is warming up. (The device is not ready.)
0x8A17	00020EA2001	No device is connected.
0x8A18	00020EB1001	The device is BUSY. (The device reports BUSY status.)
0x8A19	00020EB1002	The device is reserved. (Other process is using the device.)
0x8A1A	00020EB1003	The device is warming up. (The device is not ready.)
0x8A1B	00020EB1004	The device is warming up. (Releasing from the energy saving mode)
0x8A1C	00020EB2001	No device is connected.
0x8A1D	00020EC1002	The device is reserved. (Other process is using the device.)
0x8A1E	00020EC1003	The device is warming up. (The device is not ready.)
0x8A1F	00020EC2001	No device is connected.

2. Error Code

Table 2.3 List of Condition Codes(9/30)

Return code	Corresponding error code	Error factor
0x8A20	00021122810	Life of the lamp (Front side) Lighting time has reached to the threshold value.
0x8A21	00021122811	Life of the lamp (Back side) Lighting time has reached to the threshold value.
0x8A22	0002112282*	Hardware warning:Warning for light intensity.(Front side)
0x8A23	0002112283*	Hardware warning:Warning for light intensity.(Front side)
0x8A24	0002112284*	Hardware warning:Warning for light intensity.(Back side)
0x8A25	0002112285*	Hardware warning:Warning for light intensity.(Back side)
0x8A26	0002112286*	Hardware warning:Warning for light intensity.(Front side)
0x8A27	0002112287*	Hardware warning:Warning for light intensity.(Front side)
0x8A28	0002112288*	Hardware warning:Warning for light intensity.(Back side)
0x8A29	0002112289*	Hardware warning:Warning for light intensity.(Back side)
0x8A2A	00021123080	The dirty warning error occurred by the white level.(Front side 0)
0x8A2B	00021123088	The dirty warning error occurred by the white level.(Back side 0)
0x8A2C	0002112308*	Hardware warning:The dirty warning 1 error occurred by the white level.
0x8A2D	00021123090	The dirty warning error occurred by the Black level.(Front side 0)
0x8A2E	00021123098	The dirty warning error occurred by the Black level.(Back side 0)
0x8A2F	0002112309*	Hardware warning:The dirty warning 2 error occurred by the Black level.

Table 2.3 List of Condition Codes(10/30)

Return code	Corresponding error code	Error factor
0x8A30	000211233**	Hardware warning:Warning for roller
0x8A31	000211235**	Hardware warning:Warning life of ink
0x8A32	00021128F**	Hardware warning:Stop ejection(The number of sheets switch)
0x8A33	000211*33**	Hardware warning:Warning for roller (The number of sheet feeding has reached to the threshold value.)(sorter)
0x8A34	000211*8F**	Hardware warning:Stop ejection(The number of sheets switch)(sorter)
0x8A35	000221203**	The reference mark number error occurred.
0x8A36	000221204**	The reference mark shape error occurred.
0x8A37	000221205**	The reference mark error occurred.
0x8A38	000221206**	Anterior end of the sheet is not normal.
0x8A39	000221207**	Back end of the sheet is not normal.
0x8A3A	000221208**	Left edge of the sheet is not normal.
0x8A3B	000221209**	Right edge of the sheet is not normal.
0x8A3C	000221210**	The width of the sheet is not normal.
0x8A3D	000221211**	The length of the sheet is not normal.
0x8A3E	000221213**	Memory overflow error has occurred.
0x8A3F	000221214**	Verify mark error has occurred.

2. Error Code

Table 2.3 List of Condition Codes(11/30)

Return code	Corresponding error code	Error factor
0x8A40	000221218F*	Image scanning error has occurred.
0x8A41	000221218**	Sensor overflow error has occurred.
0x8A42	0002212F001	The width of the sheet is short.(VFG)
0x8A43	0002212F002	The width of the sheet is long.(VFG)
0x8A44	0002212F003	The length of the sheet is short.(VFG)
0x8A45	0002212F004	The length of the sheet is long.(VFG)
0x8A46	00022A11341	Size of TIFF image is too large.
0x8A47	00022C005**	The image edit error has occurred by the correction service.
0x8A48	000231258**	A numbering skew has occurred.
0x8A49	000231259**	A skew has occurred.
0x8A4A	0002312D00*	The free format error has occurred.
0x8A4B	0002312D01*	The Anti-double-scan printing check error has occurred.(The recognition program detected it.)
0x8A4C	0002312D02*	The Digital dropout error has occurred.
0x8A4D	0002312D03*	The Identification error has occurred.
0x8A4E	0002312D04*	The Salary report Image error has occurred.
0x8A4F	0002312D05*	Two dimension code error has occurred.

Table 2.3 List of Condition Codes(12/30)

Return code	Corresponding error code	Error factor
0x8A50	00024123A**	The ultrasonic sensor error has occurred.(Non-Sequence2 specification)
0x8A51	00024128001	The Mixed sheet length error has occurred.(Long)
0x8A52	00024128002	The Mixed sheet length error has occurred.(Short)
0x8A53	00024128100	The Sheet thickness error has occurred.(Thickness cannot be detected.)(Thin)
0x8A54	000241281FF	The Sheet thickness error has occurred.(Thickness cannot be detected.)(Thick)
0x8A55	000241281**	The Sheet thickness error has occurred.
0x8A56	00024128201	Sheet length error has occurred.(Detection by Photo)(Short)
0x8A57	00024128202	Sheet length error has occurred.(Detection by Photo)(Long)
0x8A58	000241283**	The Short gap error has occurred.(Non-Sequence2 specification)
0x8A59	00024128400	The Sheet thickness error has occurred.(Thickness cannot be detected.)(Thin)
0x8A5A	000241284FF	The Sheet thickness error has occurred.(Thickness cannot be detected.)(Thick)
0x8A5B	000241284**	The Sheet thickness error has occurred.
0x8A5C	000241285**	Sheet length error has occurred.(PC22)(Non-Sequence2 specification)
0x8A5D	00024128600	The Sheet thickness error has occurred.(Thickness cannot be detected.)(Thin)
0x8A5E	000241286FF	The Sheet thickness error has occurred.(Thickness cannot be detected.)(Thick)
0x8A5F	000241286**	The Sheet thickness error has occurred.

2. Error Code

Table 2.3 List of Condition Codes(13/30)

Return code	Corresponding error code	Error factor
0x8A60	00024128900	The Sheet thickness error has occurred.(Thickness cannot be detected.)(Thin)
0x8A61	000241289FF	The Sheet thickness error has occurred.(Thickness cannot be detected.)(Thick)
0x8A62	000241289**	The Sheet thickness error has occurred.
0x8A63	00024128A**	An ultrasonic multi-feed detection error has occurred.(Non-Sequence2 specification)
0x8A64	000250F****	The function was rejected.
0x8A65	000264C****	It is warning of the end.

Table 2.3 List of Condition Codes(14/30)

Return code	Corresponding error code	Error factor
0x8B00	000301290**	The device is a halt condition.
0x8B01	000301296**	The start of the device is waited for.
0x8B02	000301298**	The start of the device is waited for.
0x8B03	000301*96**	The start of the device is waited for.(sorter)
0x8B04	000321260**	The Sheet jam has occurred.
0x8B05	000331218F*	The Image taking error has occurred.
0x8B06	000331220**	The PC11 photo sensor error has occurred.
0x8B07	000331221**	The PC20 photo sensor error has occurred.
0x8B08	000331222**	The PC22 photo sensor error has occurred.
0x8B09	000331223**	The PC21 photo sensor error has occurred.
0x8B0A	000331224**	The PC31 photo sensor error has occurred.
0x8B0B	000331225**	The PC41 photo sensor error has occurred.
0x8B0C	000331226**	The PC42 photo sensor error has occurred.
0x8B0D	000331227**	The PCSX photo sensor error has occurred.
0x8B0E	0003312290*	Lamp error has occurred.(light intensity error:Front sensor1)
0x8B0F	0003312291*	Lamp error has occurred.(light intensity error:Front sensor2)

2. Error Code

Table 2.3 List of Condition Codes(15/30)

Return code	Corresponding error code	Error factor
0x8B10	0003312292*	Lamp error has occurred.(light intensity error:Back sensor1)
0x8B11	0003312293*	Lamp error has occurred.(light intensity error:Back sensor2)
0x8B12	0003312294*	Lamp error has occurred.(Front sensor1:DA2)
0x8B13	0003312295*	Lamp error has occurred.(Front sensor2:DA2)
0x8B14	0003312296*	Lamp error has occurred.(Back sensor1:DA2)
0x8B15	0003312297*	Lamp error has occurred.(Back sensor2:DA2)
0x8B16	0003312298*	The light intensity error has occurred.(Front)
0x8B17	0003312299*	The light intensity error has occurred.(Front)
0x8B18	000331229A*	The light intensity error has occurred.(Back)
0x8B19	000331229B*	The light intensity error has occurred.(Back)
0x8B1A	000331229C*	The light intensity error has occurred.(Front)
0x8B1B	000331229D*	The light intensity error has occurred.(Front)
0x8B1C	000331229E*	The light intensity error has occurred.(Back)
0x8B1D	000331229F*	The light intensity error has occurred.(Back)
0x8B1E	000331231**	The PC51 photo sensor error has occurred.
0x8B1F	000331234**	Hardware error has occurred.

Table 2.3 List of Condition Codes(16/30)

Return code	Corresponding error code	Error factor
0x8B20	0003312368*	The ultrasonic sensor error has occurred.
0x8B21	000331236**	The Roller Displacement error has occurred.
0x8B22	000331237**	The PC12 photo sensor error has occurred.
0x8B23	000331238**	The PCEX photo sensor error has occurred.
0x8B24	00033123A**	The ultrasonic sensor error has occurred.
0x8B25	000331240**	The stacker mistake selection has occurred.
0x8B26	000331244**	The stacker mistake selection has occurred.
0x8B27	000331247**	The PCMX photo sensor error has occurred.
0x8B28	0003312481*	Hardware error:Mirror boundary error has occurred.
0x8B29	0003312482*	Hardware error:Mirror black area error has occurred.
0x8B2A	0003312483*	Hardware error:Mirror white area error has occurred.
0x8B2B	0003312484*	Hardware error:Mirror black and position check error has occurred.
0x8B2C	0003312485*	Hardware error:Mirror white and position check error has occurred.
0x8B2D	0003312486*	Hardware error:The CIS level check error has occurred.
0x8B2E	000331249**	Numbering error has occurred.
0x8B2F	000331258**	A numbering skew has occurred.

2. Error Code

Table 2.3 List of Condition Codes(17/30)

Return code	Corresponding error code	Error factor
0x8B30	000331261**	The Sheet jam has occurred.(Hopper jam, Scanner jam)
0x8B31	000331262**	The Sheet jam has occurred.(Transport, Sheet clear)
0x8B32	000331263**	The Sheet jam has occurred.(Gate)
0x8B33	000331264**	The Sheet jam has occurred.(Stacker)
0x8B34	0003312700*	Light intensity control error has occurred.(Front sensor 1)
0x8B35	0003312701*	Light intensity control error has occurred.(Front sensor 2)
0x8B36	0003312702*	Light intensity control error has occurred.(Back sensor 1)
0x8B37	0003312703*	Light intensity control error has occurred.(Back sensor 2)
0x8B38	0003312704*	Light intensity control error has occurred.(Front sensor 2)(DA2)
0x8B39	0003312705*	Light intensity control error has occurred.(Front sensor 2)(DA2)
0x8B3A	0003312706*	Light intensity control error has occurred.(Back sensor 1)(DA2)
0x8B3B	0003312707*	Light intensity control error has occurred.(Back sensor 2)(DA2)
0x8B3C	0003312708*	Light intensity control error has occurred.
0x8B3D	0003312709*	Light intensity control error has occurred.
0x8B3E	000331270A*	Light intensity control error has occurred.
0x8B3F	000331270B*	Light intensity control error has occurred.

Table 2.3 List of Condition Codes(18/30)

Return code	Corresponding error code	Error factor
0x8B40	0003312720*	The video gain error has occurred.(Front)
0x8B41	0003312721*	The video gain error has occurred.(Front)
0x8B42	0003312722*	The video gain error has occurred.(Back)
0x8B43	0003312723*	The video gain error has occurred.(Back)
0x8B44	0003312724*	The video gain error has occurred.(Unevenness)
0x8B45	0003312725*	The video gain error has occurred.(Front)
0x8B46	0003312726*	The video gain error has occurred.(Front)
0x8B47	0003312727*	The video gain error has occurred.(Back)
0x8B48	0003312728*	The video gain error has occurred.(Back)
0x8B49	0003312729*	The video gain error has occurred.(Unevenness)
0x8B4A	0003312730*	The Unevenness error has occurred.(WRK)
0x8B4B	0003312731*	The Front WRK is illegal.
0x8B4C	0003312732*	The Front WRK is illegal.
0x8B4D	0003312733*	The Back WRK is illegal.
0x8B4E	0003312734*	The Back WRK is illegal.
0x8B4F	00033128001	The Mixed sheet length error has occurred.(Long)

2. Error Code

Table 2.3 List of Condition Codes(19/30)

Return code	Corresponding error code	Error factor
0x8B50	00033128002	The Mixed sheet length error has occurred.(Short)
0x8B51	00033128100	The Sheet thickness error has occurred.(Thickness cannot be detected.)(Thin)
0x8B52	000331281FF	The Sheet thickness error has occurred.(Thickness cannot be detected.)(Thick)
0x8B53	000331281**	The Sheet thickness error has occurred.
0x8B54	00033128201	Sheet length error has occurred.(Detection by Photo)(Short)
0x8B55	00033128202	Sheet length error has occurred.(Detection by Photo)(Long)
0x8B56	000331283**	The Short gap error has occurred.
0x8B57	00033128400	The Sheet thickness error has occurred.(Thickness cannot be detected.)(Thin)
0x8B58	000331284FF	The Sheet thickness error has occurred.(Thickness cannot be detected.)(Thick)
0x8B59	000331284**	The Sheet thickness error has occurred.
0x8B5A	000331285**	Sheet length error has occurred.(PC22)
0x8B5B	00033128600	The Sheet thickness error has occurred.(Thickness cannot be detected.)(Thin)
0x8B5C	000331286FF	The Sheet thickness error has occurred.(Thickness cannot be detected.)(Thick)
0x8B5D	000331286**	The Sheet thickness error has occurred.
0x8B5E	000331287**	A sheet is in the feeder.
0x8B5F	000331288**	A sneak-feed has occurred.

Table 2.3 List of Condition Codes(20/30)

Return code	Corresponding error code	Error factor
0x8B60	00033128900	The Sheet thickness error has occurred.(Thickness cannot be detected.)(Thin)
0x8B61	000331289FF	The Sheet thickness error has occurred.(Thickness cannot be detected.)(Thick)
0x8B62	000331289**	The Sheet thickness error has occurred.
0x8B63	00033128A**	An ultrasonic multi-feed detection error has occurred.
0x8B64	000331291**	The stacker is full.
0x8B65	000331294**	The hopper interlock has occurred.
0x8B66	000331296**	The diagnosis stop has occurred.
0x8B67	000331297**	The cover is open.
0x8B68	000331*25**	The HPCX photo sensor error has occurred.(sorter)
0x8B69	000331*26**	The VMSX photo sensor error has occurred.(sorter)
0x8B6A	000331*27**	The PCSX photo sensor error has occurred.(sorter)
0x8B6B	000331*31**	The PCFX photo sensor error has occurred.(sorter)
0x8B6C	000331*38**	The PCEX photo sensor error has occurred.(sorter)
0x8B6D	000331*44**	The stacker mistake selection has occurred.(sorter)
0x8B6E	000331*45**	The Uint or Line mistake selection has occurred.(sorter)
0x8B6F	000331*47**	The VPCX photo sensor error has occurred.(sorter)

2. Error Code

Table 2.3 List of Condition Codes(21/30)

Return code	Corresponding error code	Error factor
0x8B70	000331*61**	The Sheet jam has occurred.(sorter connection part,lower part)
0x8B71	000331*62**	The Sheet jam has occurred.(sorter lower part)
0x8B72	000331*63**	The Sheet jam has occurred.(sorter Vertical part)
0x8B73	000331*64**	The Sheet jam has occurred.(sorter Stacker)
0x8B74	000331*87**	The Transportation check error has occurred.(sorter)
0x8B75	000331*88**	A sneak-feed has occurred.(sorter)
0x8B76	000331*91**	The ejection was stopped.(sorter)
0x8B77	000331*96**	The diagnosis stop has occurred.(sorter)
0x8B78	000331*97**	The cover is open.(sorter)
0x8B79	000331*9A**	The latch is open.(HILX)(sorter)
0x8B7A	000331*9B**	The latch is open.(VILX)(sorter)
0x8B7B	00033A1****	The Image taking window setting error has occurred.
0x8B7C	000350E****	The Format program error has occurred.
0x8B7D	000361291**	The stacker is full.
0x8B7E	000361293**	The door is open.
0x8B7F	000361295**	The sheet cannot be sent.
0x8B80	000361*91**	The ejection was stopped.(sorter)
0x8B81	000361*93**	The door is open.(sorter)

Table 2.3 List of Condition Codes(22/30)

Return code	Corresponding error code	Error factor
0x8C00	00040A0****	The error occurred in the parameter of the function.(by OCR management module)
0x8C01	00040A1****	The error occurred in the parameter of the function.(by OCR management module)
0x8C02	00040A2****	The error occurred in the parameter of the function.(by OCR management module)
0x8C03	00040C0****	The error occurred in the parameter of the function.(by the correction service)
0x8C04	00040D0****	The error occurred in the parameter of the function.(by Format management module)
0x8C05	00040D1****	The error occurred in the parameter of the function.(by Format Entry management module)
0x8C06	000602225**	The USB command error has occurred.
0x8C07	00060E0****	Recoverable error has occurred by Device control module
0x8C08	00060E61001	The device is BUSY. (The device reports BUSY status.)
0x8C09	00060E61002	The device is reserved. (Other process is using the device.)
0x8C0A	00060E61003	The device is warming up. (The device is not ready.)
0x8C0B	00060E61102	The unit attention has occurred.
0x8C0C	00060E62000	Selection Timeout has occurred.
0x8C0D	00060E62001	No device is connected.
0x8C0E	00060E81001	The device is BUSY. (The device reports BUSY status.)
0x8C0F	00060E81002	The device is reserved. (Other process is using the device.)

2. Error Code

Table 2.3 List of Condition Codes(23/30)

Return code	Corresponding error code	Error factor
0x8C10	00060E81003	The device is warming up. (The device is not ready.)
0x8C11	00060E81102	The unit attention has occurred.
0x8C12	00060E82000	Selection Timeout has occurred.
0x8C13	00060E82001	No device is connected.
0x8C14	00060E91002	The device is reserved. (Other process is using the device.)
0x8C15	00060E91003	The device is warming up. (The device is not ready.)
0x8C16	00060E92001	No device is connected.
0x8C17	00060EA1002	The device is reserved. (Other process is using the device.)
0x8C18	00060EA1003	The device is warming up. (The device is not ready.)
0x8C19	00060EA2001	No device is connected.
0x8C1A	00060EB1001	The device is BUSY. (The device reports BUSY status.)
0x8C1B	00060EB1002	The device is reserved. (Other process is using the device.)
0x8C1C	00060EB1003	The device is warming up. (The device is not ready.)
0x8C1D	00060EB2001	No device is connected.
0x8C1E	00060EC1002	The device is reserved. (Other process is using the device.)
0x8C1F	00060EC1003	The device is warming up. (The device is not ready.)

Table 2.3 List of Condition Codes(24/30)

Return code	Corresponding error code	Error factor
0x8C20	00060EC2001	No device is connected.
0x8C21	0008004****	The format program error has occurred.
0x8C22	0008005****	The format object error has occurred.
0x8C23	0008006****	The error occurred in the parameter of the function.(Mode Select)
0x8C24	0008007F**0	The error occurred in the parameter of the function.(Set Window)
0x8C25	0008008****	The Program download file error has occurred.
0x8C26	0008009****	The Program download error has occurred.
0x8C27	00080D1****	The error occurred when the Format Entry management was executed.
0x8C28	0008106****	The error without information has occurred.
0x8C29	000901219**	Hardware error has occurred.(DMA)
0x8C2A	000901232**	Hardware error has occurred.(Photo)
0x8C2B	000901234**	Hardware error has occurred.(Elevator alarm)
0x8C2C	000901255**	Hardware error has occurred.(H/W)
0x8C2D	000901257F*	Hardware error has occurred.(Video)
0x8C2E	000901276**	Hardware error has occurred.(FEEDC)
0x8C2F	00090127A**	Unrecoverable error has occurred by Recognition control module.(Memory system,Registry,Dump)

2. Error Code

Table 2.3 List of Condition Codes(25/30)

Return code	Corresponding error code	Error factor
0x8C30	00090127B**	Unrecoverable error has occurred by Recognition control module.(DII load error,Sequence error)
0x8C31	00090127C**	Unrecoverable error has occurred by Recognition control module.(Salary report reading)
0x8C32	000901*19**	Hardware error has occurred.(DMA)(sorter)
0x8C33	000901*76**	Hardware error has occurred.(FEEDC)(sorter)
0x8C34	0009061****	The error of the part of making to binary has occurred.
0x8C35	0009062****	The diagnosis error has occurred in IO/C(VM)
0x8C36	00090630***	The diagnosis error has occurred in FEED.(Motor)
0x8C37	00090631***	The diagnosis error has occurred in FEED.(NMB)
0x8C38	00090632***	The diagnosis error has occurred in PLL Lock
0x8C39	00090638***	The Initial start error has occurred.
0x8C3A	00090639***	The diagnosis error has occurred in Communication driver
0x8C3B	0009063A***	The Disagreement error of elevator option has occurred.
0x8C3C	0009063B***	The transmission buffer Error of EEP-ROM has occurred.
0x8C3D	00090640***	The read/write error of filter memory has occurred.
0x8C3E	0009065**00	The USBC Inline error has occurred.
0x8C3F	0009066**00	The DMA REG error has occurred.

Table 2.3 List of Condition Codes(26/30)

Return code	Corresponding error code	Error factor
0x8C40	00090A0****	Unrecoverable error has occurred by OCR management module.
0x8C41	00090E0****	Unrecoverable error has occurred by Device control module.
0x8C42	00090E60***	Unrecoverable error has occurred by Scanner control module.
0x8C43	00090E61***	Hardware error has occurred.(SCSI)
0x8C44	00090E621**	The SCSI driver initialization error has occurred.
0x8C45	00090E622**	The SCSI driver Hardware error has occurred.
0x8C46	00090E623**	The SCSI bus holding error has occurred.
0x8C47	00090E624**	The SCSI driver error has occurred.
0x8C48	00090E62F**	The SCSI driver error has occurred.
0x8C49	00090E80***	Unrecoverable error has occurred by Scanner control module.
0x8C4A	00090E81***	Hardware error has occurred.(SCSI)
0x8C4B	00090E821**	The SCSI driver initialization error has occurred.
0x8C4C	00090E822**	The SCSI driver Hardware error has occurred.
0x8C4D	00090E823**	The SCSI bus holding error has occurred.
0x8C4E	00090E824**	The SCSI driver error has occurred.
0x8C4F	00090E82F**	The SCSI driver error has occurred.

2. Error Code

Table 2.3 List of Condition Codes(27/30)

Return code	Corresponding error code	Error factor
0x8C50	00090E90***	Unrecoverable error has occurred by Scanner control module.
0x8C51	00090E91***	Hardware error has occurred.(USB)
0x8C52	00090E92***	The USB driver error has occurred.
0x8C53	00090EA0***	Unrecoverable error has occurred by Scanner control module.
0x8C54	00090EA1***	Hardware error has occurred.(USB)
0x8C55	00090EA2***	The USB driver error has occurred.
0x8C56	00090EB0***	Unrecoverable error has occurred by Scanner control module.
0x8C57	00090EB1***	Hardware error has occurred.(USB)
0x8C58	00090EB2***	The USB driver error has occurred.
0x8C59	00090EC0***	Unrecoverable error has occurred by Scanner control module.
0x8C5A	00090EC1***	Hardware error has occurred.(USB)
0x8C5B	00090EC2***	The USB driver error has occurred.
0x8C5C	00090FF00**	Internal error of special scanner module has occurred.(Initialization)
0x8C5D	00090FF01**	Internal error of special scanner module has occurred.(Transportation control)
0x8C5E	00090FF04**	Internal error of special scanner module has occurred.(DMAC)
0x8C5F	00090FF05**	Internal error of special scanner module has occurred.(USB)

Table 2.3 List of Condition Codes(28/30)

Return code	Corresponding error code	Error factor
0x8C60	00090FF60**	Internal error of special scanner module has occurred.(COMMON)
0x8C61	00090FF70**	Internal error of special scanner module has occurred.(Synchronization maintenance)
0x8C62	00090FF80**	Internal error of special scanner module has occurred.(Synchronization diagnosis)
0x8C63	00090F*00**	Internal error of special scanner module has occurred.(Initialization)(sorter)
0x8C64	00090F*01**	Internal error of special scanner module has occurred.(Transportation control)(sorter)
0x8C65	00095A0****	Unrecoverable error has occurred by OCR management module.(Feature information)
0x8C66	00095E0****	Unrecoverable error has occurred by Device control module.(File system)
0x8C67	00099A0****	Unrecoverable error has occurred by OCR management module.
0x8C68	00099A293**	Unrecoverable error has occurred by OCR management module.(semaphore)
0x8C69	00099C0****	Unrecoverable error has occurred by the correction service.(Memory system)
0x8C6A	00099D0****	Unrecoverable error has occurred by Format management module.(Memory system)
0x8C6B	00099D1****	Unrecoverable error has occurred by Format Entry management module.(Memory system)
0x8C6C	00099E0****	Unrecoverable error has occurred by Device control module.(System call error)
0x8C6D	00099E6****	Unrecoverable error has occurred by Scanner control module.(System call error)
0x8C6E	00099E8****	Unrecoverable error has occurred by Scanner control module.(System call error)
0x8C6F	00099E9****	Unrecoverable error has occurred by Scanner control module.(System call error)

2. Error Code

Table 2.3 List of Condition Codes(29/30)

Return code	Corresponding error code	Error factor
0x8C70	0009EA****	Unrecoverable error has occurred by Scanner control module.(System call error)"},
0x8C71	0009EB****	Unrecoverable error has occurred by Scanner control module.(System call error)"},
0x8C72	0009EC****	Unrecoverable error has occurred by Scanner control module.(System call error)"},
0x8C73	0009AA0****	Unrecoverable error has occurred by OCR management module.(INI file,Memory system)"},
0x8C74	0009AE0****	Unrecoverable error has occurred by Device control module.(INI file)"},
0x8C75	0009AE6****	Unrecoverable error has occurred by Scanner control module.(INI file)"},
0x8C76	0009AE8****	Unrecoverable error has occurred by Scanner control module.(INI file)"},
0x8C77	0009AE9****	Unrecoverable error has occurred by Scanner control module.(INI file)"},
0x8C78	0009AEA****	Unrecoverable error has occurred by Scanner control module.(INI file)"},
0x8C79	0009AEB****	Unrecoverable error has occurred by Scanner control module.(INI file)"},

Table 2.3 List of Condition Codes(30/30)

Return code	Corresponding error code	Error factor
0x8C7A	0009AEC****	Unrecoverable error has occurred by Scanner control module.(INI file)",
0x8C7B	0009BA0****	Unrecoverable error has occurred by OCR management module.(Registry)(Registry)",
0x8C7C	0009BC0****	Unrecoverable error has occurred by the correction service.(Registry)",
0x8C7D	0009BE0****	Unrecoverable error has occurred by Device control module.(Registry)",
0x8C7E	0009CA2****	Unrecoverable error has occurred by OCR management module.(Image Edit)",
0x8C7F	0009CC0****	Unrecoverable error has occurred by the correction service.(Image Edit)",
0x8C80	0009CE0****	Unrecoverable error has occurred by Device control module.(Image quality parameter conversion)",
0x8C81	0009DC0****	Unrecoverable error has occurred by the correction service.(Common function)",
0x9000		The hoper is empty.

2.4 Error Dialogs In Scanning

If error has occurred in scanning, the error message is displayed.

A recoverable error displays the Recoverable Error Dialog as shown in Figure 2.1.

An unrecoverable error displays the Unrecoverable Error Dialog as shown in Figure 2.2.

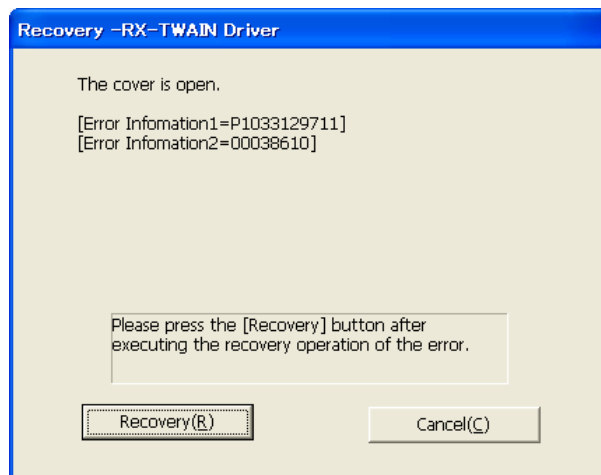


Figure 2.1 Recoverable Error Dialog box

When a sheet is in scanner, please press the [Recovery] button after retrieving the sheet by opening the cover.

Pressing the recovery button when a sheet is in scanner may damage the sheet.

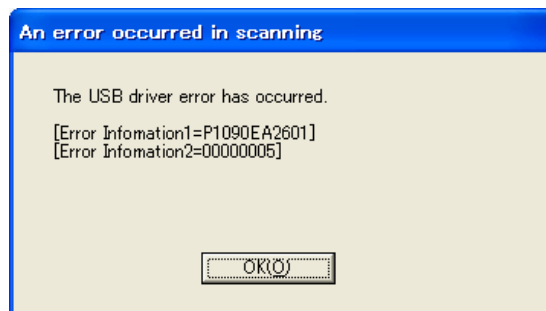


Figure 2.2 Unrecoverable Error Display Dialog box

When a sheet is in scanner, please press the [OK] button after retrieving the sheet by opening the cover.

Pressing the [OK] button when a sheet is in scanner may damage the sheet.

After an unrecoverable error, please turn off and on the scanner and try to scan again.

2.5 Dialog when Scanning Suspended

When Stop button in dialog or device stop button is pressed during scanning, Fig. 2.3 will be displayed.

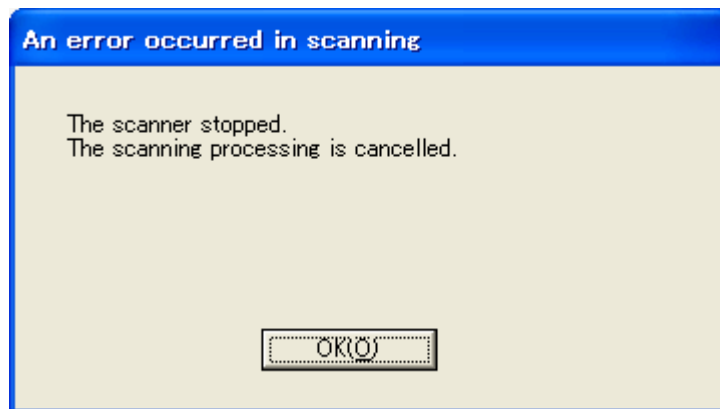


Fig. 2.3 Stop Confirmation Dialog

2. Error Code

Appendix

A-1 Dump Information

When TWAIN driver error, system down error of scanner systems, unrecoverable error, or hung-up of the TWAN driver occurs, get TWAIN driver log, memory dump of scanner and send them .

Resuming operation should be done after saving failure information and recovery operation.

(There may be a case that information will be overwritten.)

(1) Required tools

Formatted data storage device

Appendix

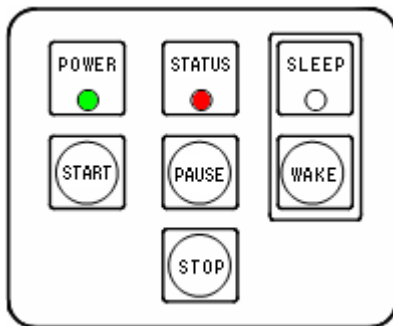
(2) Procedure

No.	Item	Contents
1	Getting scanner dump	Get scanner memory dump and download dump file.
2	Download log information file	Download log information file of the TWAIN driver.

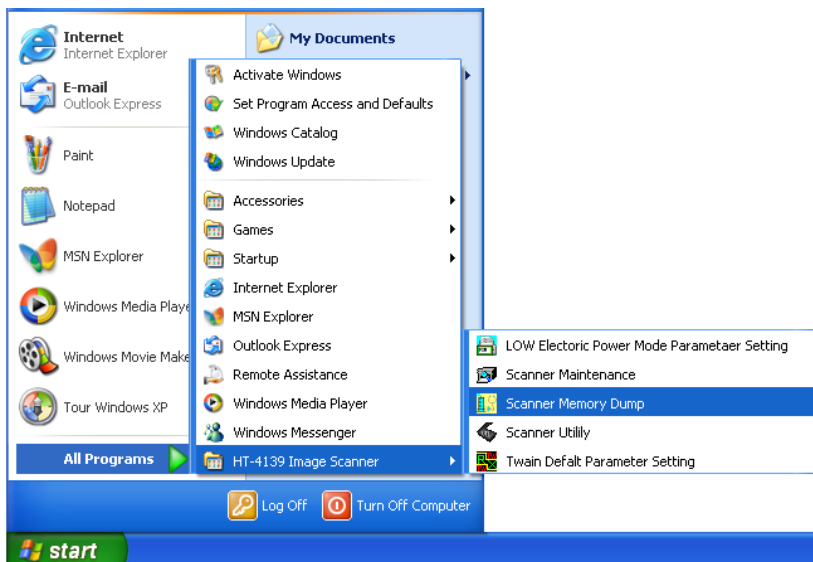
No.	Item	Contents
1	Getting scanner dump	Get scanner memory dump and download dump file.

(1) Perform this when system down error or unrecoverable error occurs.

The panel indicates the system down status as shown below. Do not power off.



At systems down Power Supply / Status lamp ON



(2) Scanner memory dump
 Select "All programs" from a taskbar and click the "Scanner Memory Dump" from the "HT-4139 Image Scanner" group.

(3)Get dump information from the scanner and scanner will be rebooted.

Examining errors requires the following files.

C:\OCR32\ETC32 directory

OCR8F.DMP

OCR8L.DMP

OCR8O.DMP

OCR81.DMP

OCR82.DMP

No.	Item	Contents
2	Download log information file	Download log information file of the TWAIN driver.

The TWAIN driver acquires the dump information.

Examining errors requires the following files.

The following OCR32 is the OCR system setup directory.

C:\OCR32\ETC32 directory

AUXLOG.OCR

ImageProcess.DMP

OCRICL_IMGDMF.BMP

OCRPSW32.trc

Ocrz2.dmp

OCR1.DMP

OCR1.CSV

OCR2.DMP

OCR2.CSV

OCR3.DMP

OCR3.CSV

RxTwainDs***.Log (The *** part is numeral.)

OCR32\RXTWAIN directory

All files

The dump information does not collect the personal information.

In some cases, image files will be required for analysis.

A-2 How to Analyze Error

This TWAIN driver displays an error message when an error occurs and also save error log in a file for analysis it after you terminate your application program.

Refer to 4.1 Error code list or scanner User's manual and analyze the error information that you will get from the file.

File name

C:\¥OCR32¥RXTWAIN¥RXTWAINERROR.txt

Appendix

Contents of file (Sample)

[ERRORCODE]	← the latest error
ERROR1=00020EA1003	← error code
ERROR2=00022800	← detailed error code
FUNC=initial process	← process name
DATE=2008/11/07 13:45:01	← error time

[LOG]	error log (Max 100)
1=2008/11/07 13:45:01 FUNC= initial process ERR1=00020EA1003,ERR2=00022800	

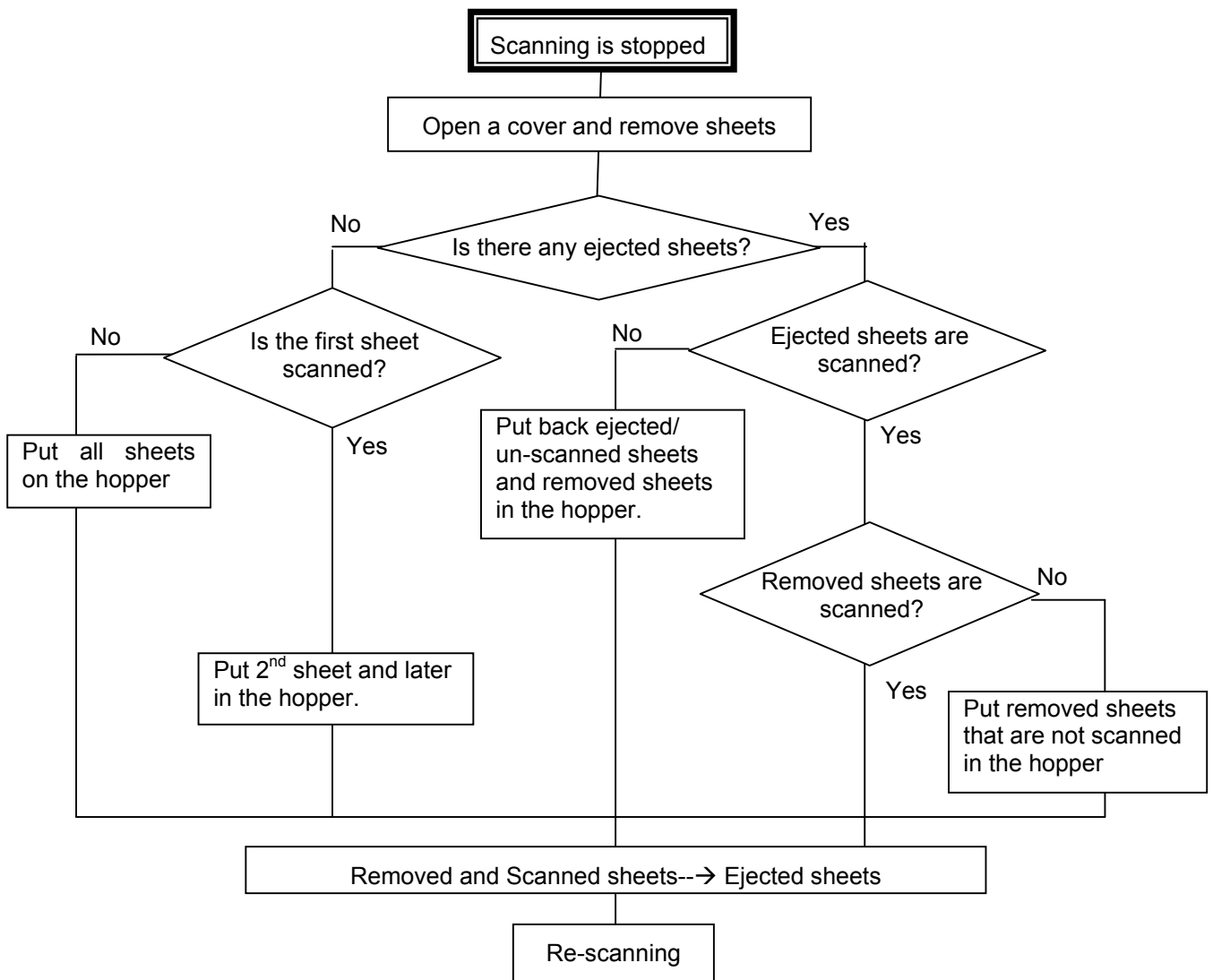
[LOGCURRENT]	
Current=1	the number of error log

This file can save up to 100 error information. Error information exceed 100 overwrite older ones.
The TWAIN driver will not report an error against write error to this log file.

A-3 How to Recover Error

Sometimes continuous scanning will be suspended due to paper jam or other reasons. In that case put sheets that have not been scanned on the hopper and continue scanning process. (There are some software/ hardware errors that cannot be recovered.)

A sample of error recovery is shown below.



This is a sample of error recovery flow and it should be modified for your business operation.

A-4 Notes on Four-point detection

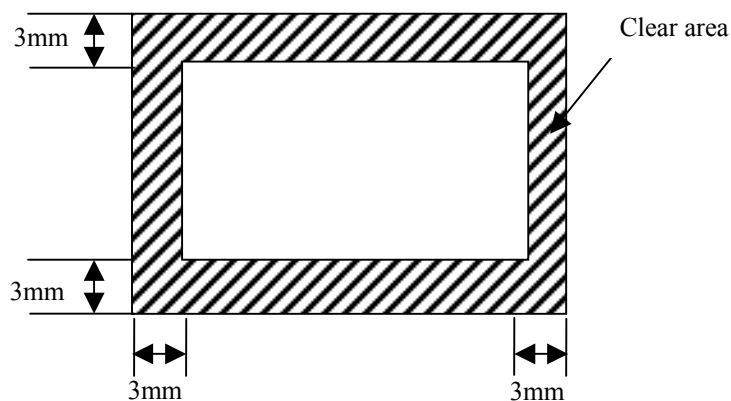
This TWAIN driver detect four points from the scan image.

The area to distinguish the background and the sheet because the background becomes black in our scanner is necessary.

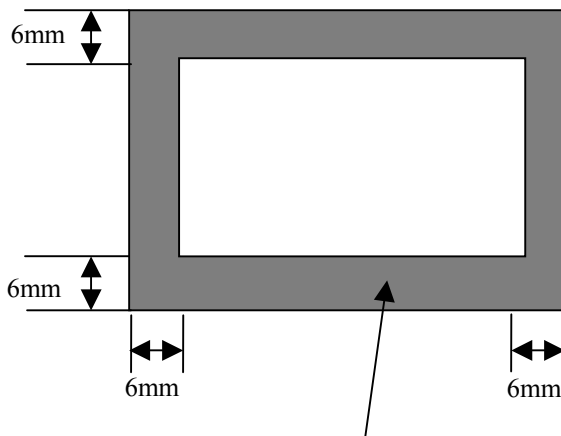
To detect four points of the sheet, this TWAIN driver usually detects it from the black and white image. (If it is a multilevel image, it makes it to binary.)

Therefore, the clear area (area that becomes white) is 3mm or more necessary for surroundings of the sheet.

When the clear area can be secured around the sheet, this method is recommended.



You can select "Conduct the color Four-point detection" when there is a multilevel image. It detects four points from the difference of brightness with the background color. Therefore, four points can be detected even if there is a color in the clear area. However, when a lot of colors near the black are included in the area where the difference of brightness is measured, four points are not correctly detected. The area where the difference of brightness can be measured is 6mm or more necessary.



The area where the difference of brightness

The mean value of D_c , D_m , and D_y must not be and there must not be large color from 0.93.

The difference of brightness with the background must be and there must be 30 or more.(RBG)

The radiance value must be and there must be 50 or more.(RBG)

A-5 Notes on Four-Point-Coordinates Recognition Errors

Four-point-Coordinates Recognition errors may occur depending on the status of images having been scanned. These errors occur when the four corners of a sheet failed to be detected.

These errors are usually caused from the following problems.

(1) Error resulting from soil at the reference side

- This error occurs when white vertical noise is made due to dust such as paper dust.

Open the opening/closing part at the front and check that there is no dirt on the glass of the scanning unit. Cleaning requires you to use a piece of gauze or other cloth that is as new as possible. Wiping the glass with a soiled cloth may increase the error detection.

(2) Imperfect image error

- This error occurs when a large skew causes a part of the sheet to get outside the image area and makes a part of the image look imperfect.

Check that the sheet is not skewed when it is being sent.

(3) Rectangular detection error

This error occurs when detected 4 points do not make a rectangle with them.

Check that the sheet.

(4) Other errors (such as a tip error and a left end error)

- These errors occur when the entire image is completely black.

- These errors occur when the image is spotted with white noises.

- These errors occur when the image contains an extremely small white area.

Check the sheet.

You may fail to scan a sheet not conforming to the specifications.

For the specifications of the sheet, refer to the "OCR Friend Operation Guide".

A-6 Note for sheet check

There might be cases that dual feeding error and size invalid error occurs however the sheet checking is enabled. Check images comparing the originals and scanned data.

There might be cases that sheet check does not work correctly under some conditions below.

Sheets are adhere and feed.

Dark sheet or paper with a dark border is fed.

Multiple feeding occurs out of detection area.

The four-point detection does not work correctly due to black border.

Sheet is not placed aligned at left edge.

Thin sheet is fed.

Papers with different friction coefficient are mixed.

Specified check during the sheet check.

The sheet check is not enabled.

When the patch cord is printed in the vertical direction.

A-7 Notes on Numbering

If a numbering error occurred, check the image and numbering on the last ejected sheet and all the sheets ejected by recovery.

If you do not check the ejection, the numbering may not be on the sheets of several pages before the last sheet.

There may be cases that numbering is not printed properly.

Lack of ink

Fed in skew

Print on the similar color area.

Printable check error

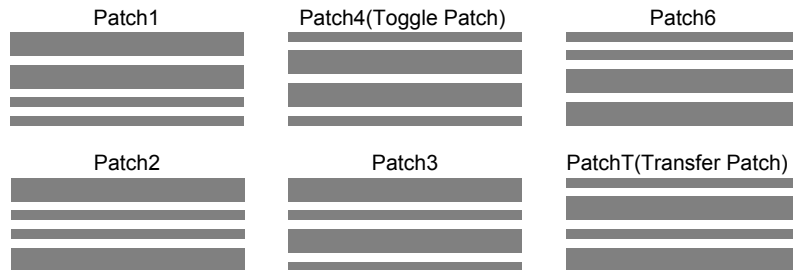
Perform sheet scanning and ejection separately

Print on the second sheet of dual feeding.

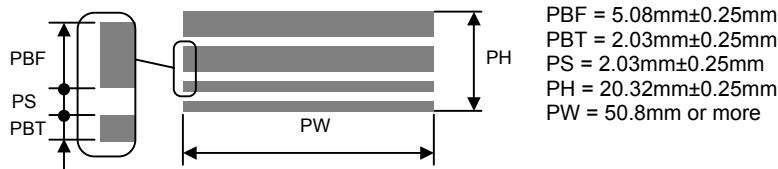
A-8 Notes on PatchCode

The specification of the patch cord that can be recognized by this TWAIN driver becomes it as follows.

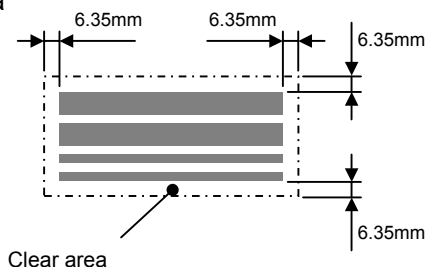
item		specification
Patch type that can be recognized		1, 2, 3, 4, 6, T
PatchCode Size	The wide bars(PBF)	5.08mm±0.25mm(0.20±0.01inches)
	The narrow bars(PBT)	2.03mm±0.25mm(0.08±0.01inches)
	Spaces (PS)	2.03mm±0.25mm(0.08±0.01inches)
	The maximum width of the patch code (PH)	20.32mm±0.25mm(0.80±0.01inches)
	The minimum overall length of the patch bars (PW)	50.8mm or more (2.0 inches or more)
Clear area	space between the patch code and any other printed information	6.35mm or more of patch cord in surroundings
Patchcode detection condition	Effective range of vertical direction (When the direction of reading is the above)	6.35mm to 95.25mm(0.25~3.75inches) (From the leading edge of the document)
	Effective range of horizontal direction (When the direction of reading is the above)	Patch codes must appear at least 6.35mm from the right, left, and leading edges of the document.
	Patch Positioning	Patches should appear with the bars parallel to the leading edge of the document (fed into the transport first).
Others		Conform to Kodak specification (A-61599)



PatchCode Size

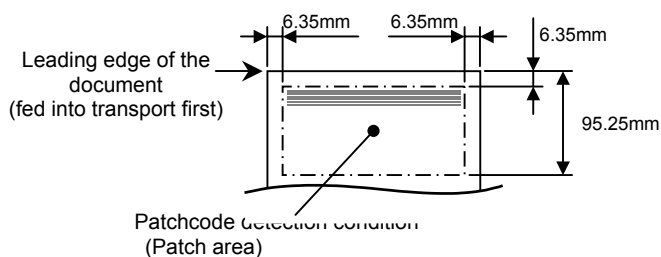


Clear area

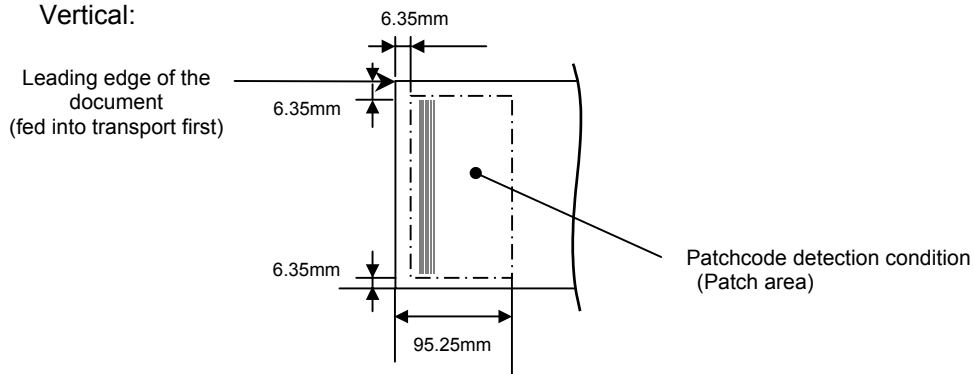


Patchcode Recognition Orientation

Horizontal:



Vertical:



Horizontal – Vertical:

Horizontal direction is recognized in the beginning.
Next, the vertical direction is recognized.

Vertical – Horizontal:

The vertical direction is recognized in the beginning.
Next, horizontal direction is recognized.